



## RESEARCH PAPER

## OPEN ACCESS

## SEBAL application to estimate water use efficiency of Pistachio trees in saline condition (Case study: Bahadoran Plain, Iran)

Mohammad Hassan Rahimian<sup>1,2</sup>, Mohammad Shayannejad\*<sup>1</sup>, Saeid Eslamian<sup>1</sup>,  
 Mahdi Gheysari<sup>1</sup>, Reza Jafari<sup>3</sup>

<sup>1</sup>Department of Water Engineering, College of Agriculture, Isfahan University of Technology, Isfahan, Iran

<sup>2</sup>National Salinity Research Center, Agricultural Research Education and Extension Organization (AREEO), Yazd, Iran

<sup>3</sup>Department of Range and Watershed Management, College of Natural Resources, Isfahan University of Technology, Isfahan, Iran

Article published on June 30, 2017

**Key words:** SEBAL, Pistachio, Water use efficiency, Leaching fraction, Landsat 8

### Abstract

Annual evapotranspiration (ET) of mature pistachio trees in saline aquifer of Bahadoran plain in central Iran was first estimated on a distributed basis by running the Surface Energy Balance Algorithm for Land (SEBAL) model through Landsat 8 satellite data. Finally, the SEBAL estimate of annual water use evaluated by performing water balance analysis over the Bahadoran irrigation district. The water balance  $ET_a$  estimate was 19% larger than the SEBAL-based  $ET_a$  due to the uncertainties involved in estimation of Leaching Fraction (LF) parameter. The average LF was estimated to be 28% (with standard deviation of 19%), predominantly higher than the anticipated average leaching requirement of the Bahadoran area (23%). Assuming that SEBAL has provided accurate estimates, 64% of cumulative irrigation depth (792mm of 1242mm) was consumed by the evapotranspiration process of pistachio orchards. Moreover, the average annual released water to the Bahadoran irrigation district seems to be adequate to leach the salts down to the root zone. The latter result depends on the irrigation water salinities as well as per irrigation applied depths which may change from a field to another field and cause to over or under irrigation of pistachio orchards. Such possible under or over irrigations were demonstrated by the fluctuations of leaching fractions (3% to 65%), soil salinities (1.73 to 31.6  $dS\cdot m^{-1}$ ) and consequently, the yields (500 to 4200  $kg\cdot ha^{-1}$ ). Under such a condition, averages of 0.12 $kg\cdot m^{-3}$  and 0.20  $kg\cdot m^{-3}$  obtain for water use efficiency and evapotranspiration use efficiency of Bahadoran pistachios, respectively.

\*Corresponding Author: Mohammad Shayannejad ✉ [shayannejad@cc.iut.ac.ir](mailto:shayannejad@cc.iut.ac.ir)

## Introduction

Iran is the world's largest pistachio producer, with a total harvested area of 316,780 ha in 2014 (FAOSTAT, 2016). Pistachio (*Pistacia vera* L.) is a sub-tropical crop belongs to the *Anacardiaceae* family (Kamali and Owji, 2016). The high tolerance of pistachio tree to the soil water and salinity (Ferguson, 2003; Sanden *et al.*, 2004; Goldhamer, 2005; Ferguson *et al.*, 2005a; Ferguson *et al.*, 2005b) along with its promising economic gains are the major reasons for development of this crop to many parts of the world.

In addition to Iran, pistachio cultivates in Middle Eastern, some European and American countries (Ozden and Alayunt, 2006; Kamali and Owji, 2016). The resistance of this crop to salinity stress may be due to its ability to retain salts in roots and limit transportation to shoot tissues (Karimi *et al.*, 2011), while its drought tolerance may be achieved by physiological changes and osmotic adjustment (Gijon *et al.*, 2011).

Most of Iranian pistachio orchards are located in central part of the country, which is identified as an arid and severe water scarce region. In addition to severe water scarcity, the agricultural sector in this part of the country is suffering from high levels of soil and water salinities (Rahimian *et al.*, 2014). In Yazd province, the second pistachio producer of Iran, the weighted average electrical conductivity of irrigation water is  $5.3\text{dS}\cdot\text{m}^{-1}$ . In this province, salinity of water used for pistachio production may reach  $22\text{dS}\cdot\text{m}^{-1}$  (Cheraghi *et al.*, 2009) and more. Annual precipitation of Yazd province is about 82 mm and evaporation exceeds to  $3000\text{mm}\cdot\text{yr}^{-1}$ . Groundwater table is relatively deep and is the main source of pistachio irrigation water. Furthermore, over exploiting of groundwater is declining its level and deteriorating its quality (Cheraghi *et al.*, 2009).

In order to effectively manage land and water resources of this province and minimize environmental consequences of irrigating with saline water, a comprehensive knowledge on agricultural water balance seems to be required.

Leaching of excess salts from the root zone is a requisite for the sustainability of such irrigated agricultural systems. To maintain a proper soil salt balance, some deep percolation of water is needed to transport the salts out of the tree root zone (Steduto *et al.*, 2012).

The amount of deep percolation required is referred to as the leaching requirement (LR) and depends on the irrigation water salinity ( $\text{EC}_{\text{iw}}$ ) as well as the crop salt tolerance threshold ( $\text{EC}_{\text{th}}$ ) or the anticipated soil electrical conductivity ( $\text{EC}_{\text{e}}$ ). Methods have been established to estimate appropriate leaching requirements and can be obtained in FAO Irrigation and Drainage paper No. 29 (Ayres and Westcott, 1985).

In the manner of water balance analysis, satellite remote sensing (RS) technique can provide unbiased and near real-time information on water use of irrigated areas in arid/semi-arid regions (Taghvaeian and Neale, 2011). In addition, remotely sensed data may be the only source of data in un-gauged or poorly-gauged irrigation schemes (Poormohammadi *et al.*, 2012). An RS-based approach to estimate instantaneous, daily, seasonal or annual measurements of evapotranspiration (ET), is modeling of energy balance components at the land surface. Numerous surface energy balance models have been developed since 1970's, but a major breakthrough was the development of Surface Energy Balance Algorithm for Land (SEBAL) model (Bastiaanssen *et al.*, 1998) and the following models that are based on the SEBAL approach in estimating actual evapotranspiration.

The goal of this research was to use Landsat 8 imagery to map annual water use of mature pistachio trees under saline condition and to compare and evaluate the SEBAL results by performing a large scale water balance analysis and ground-based quantification of its different components (e.g. evapotranspiration, deep percolation and irrigation) in Bahadoran pistachio orchards, Yazd province, Iran. Comparison of the annual applied water with pistachio evapotranspiration demands and their leaching requirements were investigated and discussed, as well.

**Material and methods**

*Study area*

This study was conducted at 5728ha of Bahadoran pistachio (*Pistacia vera* L.) orchards in the Yazd province, Iran. The study area lies between 31°18' to 31°28' N latitudes and 54°48' to 55°0'E longitudes. Average elevation is 1050m above sea level (see Fig. 1). The long term annual precipitation in this area is only 72.4mm, a testament to its arid climate. The predominant soils have loam, clay-loam, and sandy-clay-loam textures. Pistachio trees in this area are 20 to 50 years old, consisting of different varieties, mainly Kaleghouchi, Akbari, Ahmadaghaei and Fandoghi. Pistachio tree row spacing ranges between 6.0 to 10.0m. The required irrigation water is pumped from the aquifer and applied mainly through surface irrigation method using 6-10m wide by 40-80m long borders. The irrigated width of each border ranges

between 2.0 to 6.0m. The average irrigation interval is 30 days, but it may reach as long as 45-60 days during droughts. Based on existing statistics, the average electrical conductivity of Bahadoran irrigation waters ( $EC_{iw}$ ) is about  $9dS \cdot m^{-1}$ , ranges between less than  $1dS \cdot m^{-1}$  to surprising values of  $40dS \cdot m^{-1}$  and more. Table 1 illustrates chemical composition of some irrigation waters used for pistachio production in Bahadoran plain. Most of these waters are classified as highly saline waters.

Despite of their high values of SAR, Bahadoran soils do not show any symptom of structural deterioration because of their high salinities (FAO, 1992). Unusual with these waters is the high ratio of Mg,  $Ca^{-1}$  which is occasionally greater than one. This has actually given a bitter taste to water and has occurred as a result of drop in groundwater level (Cheraghi *et al.*, 2009).

**Table 1.** Chemical composition of some irrigation wells used for pistachio production in Bahadoran plain.

Constituents	Well Number									
	1	2	3	4	5	6	7	8	9	10
EC ( $dS \cdot m^{-1}$ )	9.0	10.1	13.0	15.6	16.8	17.9	19.4	24.8	28.5	37.1
pH	7.4	7.1	7.3	7.2	7.3	7.4	7.3	7.0	6.8	6.9
Ca ( $meq \cdot L^{-1}$ )	20.0	22.8	16.0	24.0	19.2	20.8	22.4	56.8	62.4	77.2
Mg ( $meq \cdot L^{-1}$ )	14.8	14.4	20.0	18.0	17.2	26.0	22.0	50.4	42.4	55.6
Na ( $meq \cdot L^{-1}$ )	65.0	42.5	130.0	100.0	120.0	175.0	130.0	250.0	185.0	250.0
K ( $meq \cdot L^{-1}$ )	0.2	0.2	0.4	0.1	0.3	0.5	0.2	0.3	0.3	0.3
HCO <sub>3</sub> ( $meq \cdot L^{-1}$ )	3.3	4.3	1.8	3.5	3.8	1.3	2.8	2.8	3.5	2.5
SO <sub>4</sub> ( $meq \cdot L^{-1}$ )	5.8	25.6	54.6	17.1	24.5	64.5	-21.6	147.8	55.1	58.6
Cl ( $meq \cdot L^{-1}$ )	91.0	50.0	110.0	121.5	128.5	156.5	193.5	207.0	231.5	322.0
SAR	11.0	7.0	21.7	15.4	19.9	25.6	19.5	24.1	18.1	21.7
RSC	-31.6	-33.0	-34.3	-38.5	-32.7	-45.6	-41.7	-104.5	-101.3	-130.3
Mg.Ca <sup>-1</sup>	0.74	0.63	1.25	0.75	0.90	1.25	0.98	0.89	0.68	0.72

*Remote sensing of pistachio water use*

In this study, pistachio actual evapotranspiration ( $ET_a$ ) was estimated on a distributed basis, using the Surface Energy Balance Algorithm for Land (SEBAL) model. The SEBAL model (Bastiaanssen *et al.* 1998) estimates  $ET_a$  as the remainder of the surface energy balance equation in the scale of satellite image pixel:

$$ET_{inst} = 3,600 \frac{(R_n - G - H)}{\lambda \rho_w} \quad (1)$$

Where  $ET_{inst}$  is the instantaneous (hourly) evapotranspiration at the satellite overpass time ( $mm \cdot hr^{-1}$ ),  $R_n$  is the net radiation ( $W \cdot m^{-2}$ ),  $G$  is the soil heat flux ( $W \cdot m^{-2}$ ),  $H$  is the sensible heat flux ( $W \cdot m^{-2}$ ),  $\lambda$  is the latent heat of vaporization ( $J \cdot kg^{-1}$ ),

$\rho_w$  is the density of water ( $1,000kg \cdot m^{-3}$ ), and multiplier 3,600 converts from second to hour. SEBAL presents an innovative approach to calculate  $H$  by interpolating between two anchor pixels (so called hot and cold pixels) for a given satellite image.

Typically, hot (dry) pixel has to be located in a fallow agricultural field with high surface temperature ( $T_s$ ) as well as high albedo and low Normalized Difference Vegetation Index (NDVI). While, a well irrigated agricultural field with low  $T_s$  value, low albedo and high NDVI is a proper candidate for cold (wet) pixel of that scene.  $H$  in dry and cold pixels can be assumed equal to  $R_n - G$  and zero, respectively. Since hourly estimates of  $ET$  are less useful in water resources

management,  $ET_{inst}$  was converted to daily values using the so called evaporative fraction (EF) method. The EF is the ratio of latent heat flux (LE) to the available energy ( $R_n-G$ ).

$$EF_{inst} = \frac{LE}{R_n-G} \quad (2)$$

The EF method is based on the assumption that EF at the hour of satellite overpass ( $EF_{inst}$ ) is equal to 24-hr EF on the day of overpass. Once the  $EF_{inst}$  is determined, daily ET ( $ET_d$ ) can be calculated using the following equation:

$$ET_d = 86.4 \times 10^6 \frac{EF_{inst} R_{nd}}{\lambda \rho_w} \quad (3)$$

Where,  $R_{nd}$  is daily net radiation. To estimate  $ET_d$  between satellite overpass days it was assumed that the ratio of  $ET_d$  to grass-based reference evapotranspiration ( $ET_o$ ) changes linearly between

two consecutive overpass dates. The  $ET_o$  was estimated using weather variables measured at a nearby weather station and based on the Priestly and Taylor (1972) method. This method needs net radiation and soil heat flux (Swart, 2004). In RS-based studies, main advantage for application of this method refers the limited number of required parameters. Spatially distributed net radiation maps, those calculated for SEBAL, are the only spatial parameter used in this method (Mokhtari, 2005). In this study, the images acquired by the OLI and TIRS sensors aboard the Land sat 8 satellite platform were used as input to the SEBAL model. Sixteen images of different day of year (see Table 2.) were obtained to cover a pistachio growing season (early April 2015 to late November 2015) as well as out of this season to complete an entire experimental year (April 2015 to March 2016).

**Table 2.** Satellites overpass days and their corresponding meteorological data.

DOY	Date	Daily Averages*						Instantaneous (Satellite Overpass Time)	
		T <sub>min.</sub>	T <sub>max.</sub>	RH <sub>min.</sub>	RH <sub>max.</sub>	WS	SSH	WS <sub>inst.</sub>	T <sub>inst.</sub>
100	10-Apr-15	14.1	30.3	8.0	25.0	2.8	11.3	1.0	24.4
116	26-Apr-15	12.6	22.2	10.0	20.0	3.0	11.3	3.0	17.0
132	12-May-15	18.1	31.7	11.0	28.0	3.0	11.7	3.0	26.4
148	28-May-15	18.9	31.7	10.0	35.0	2.4	11.6	1.0	26.8
164	13-Jun-15	24.3	38.0	5.0	11.0	2.6	12.3	1.0	34.6
180	29-Jun-15	26.5	39.6	6.0	14.0	2.4	11.6	1.0	34.6
196	15-Jul-15	24.7	37.0	5.0	10.0	2.8	12.7	1.0	32.9
228	16-Aug-15	23.0	35.2	4.0	12.0	2.6	12.5	2.0	30.8
244	01-Sep-15	22.7	36.7	8.0	21.0	2.6	8.8	2.0	29.5
260	17-Sep-15	21.9	30.8	15.0	37.0	2.4	8.6	2.0	26.7
276	03-Oct-15	21.7	31.1	10.0	28.0	2.8	10.6	2.0	26.3
292	19-Oct-15	11.0	25.4	25.0	74.0	2.4	10.0	1.0	18.0
308	04-Nov-15	2.9	16.8	27.0	66.0	1.0	10.0	1.0	9.4
324	20-Nov-15	8.3	17.4	29.0	50.0	2.2	9.1	2.0	12.2
356	22-Dec-15	-0.8	7.9	36.0	74.0	1.0	9.1	1.0	3.5
007	07-Jan-16	3.3	17.2	23.0	60.0	1.0	9.4	1.0	11.6

\* T is the temperature (°C), RH is the relative humidity (%), WS is the wind speed (m.s<sup>-1</sup>), SSH is the sunshine hours (hr).

*Validating SEBAL results*

To validate SEBAL- $ET_a$  results, annual water use of pistachio was estimated independently as the remainder of the water balance equation:

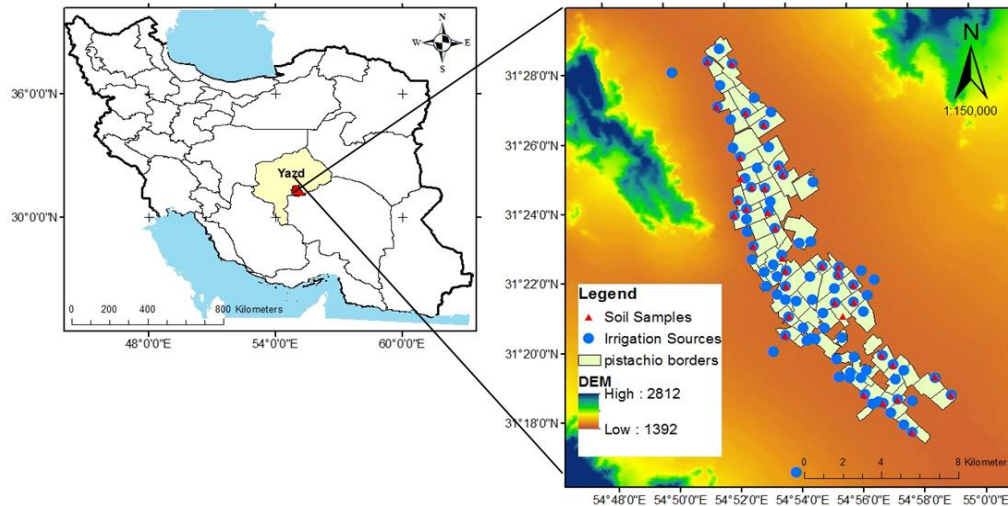
$$ET = I + P - SR - DP - \Delta S \quad (4)$$

Where I is irrigation, P is precipitation, SR is surface runoff, DP is deep percolation, and  $\Delta S$  is the change in soil water content during the experimental year (all in mm). Irrigation depth was estimated by

monitoring the hours of pump operation and measuring pump discharge (logged and measured by Yazd water resource research office 2016). Measurements at Bahadoran weather station were used for Precipitation. Due to the negligible ground slope in the region and use of border irrigation method with earthen dikes, the SR component was assumed zero. To quantify average deep percolation of Bahadoran pistachio orchards, soil electrical

conductivities ( $EC_e$ ) of 0 to 120cm soil profile as well as the irrigation water salinities ( $EC_{iw}$ ) were measured in forty representative points (see Fig. 1). Based on a methodology described by Ayers and Westcot, (1989) in FAO irrigation and drainage paper No. 29, predicting the leaching fraction (LF) is possible through measurement of soil salinity expected after

several years of irrigation (e.g. the case of Bahadoran pistachio orchards) and by calculation of a concentration factor (X) using  $EC_e$  divided by  $EC_{iw}$  in  $dS.m^{-1}$ , which is found by assuming a crop water use pattern of 40-30-20-10. The DP was calculated through multiplying the total irrigation depth by the LF, determined by the above mentioned procedure.



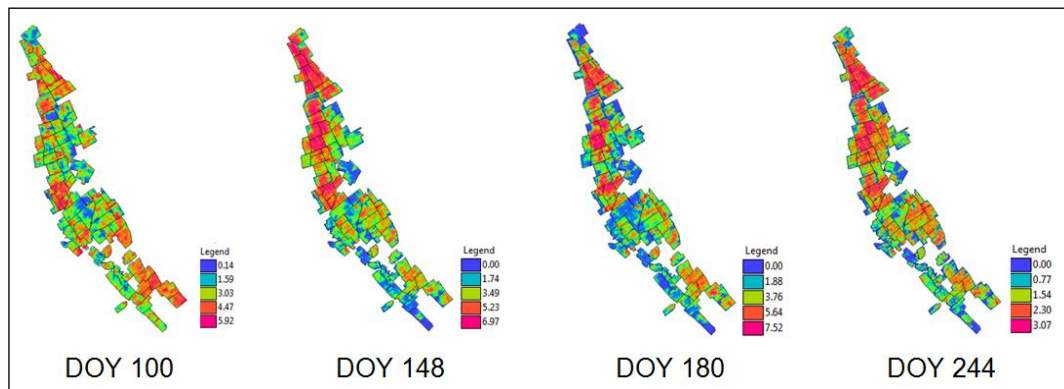
**Fig. 1.** Location of Bahadoran plain in central Iran along with Bahadoran pistachio orchards, its irrigation sources and representative soil sampling points.

**Result and discussion**

*-SEBAL-based Pistachio  $ET_a$*

Fig. 2 shows maps of daily  $ET_a$  for some representative days of 2015 pistachio growing season.  $ET_a$  maps are the products of SEBAL running on Landsat 8 satellite data, as well as employment of daily and instantaneous meteorological and other ancillary data. The lower ranges of estimated  $ET_a$  belonged to marginal lands that were occasionally

covered by native vegetation and had sparser canopy covers and also to the soil-vegetation combined pixels.  $ET_a$  spatiotemporal variations ranged from 0 to  $10.86 \text{ mm.day}^{-1}$  with standard deviations of 0.65 to  $2.47 \text{ mm.day}^{-1}$ .  $ET_a$  average and standard deviation for the entire studied region were 2.84 and  $1.63 \text{ mm.day}^{-1}$ , respectively and the maximum  $ET_a$  of pistachio trees ( $10.86 \text{ mm.day}^{-1}$ ) was observed on DOY 196 (15-July-2015) map.



**Fig. 2.** Instance maps of daily  $ET_a$ , derived from SEBAL model and landsat 8 satellite data for 2015 pistachio growing season

Fig. 3 shows daily changes of SEBAL-based  $ET_a$ , the Priestly-Taylor  $ET_o$  values along with pistachio daily  $ET_c$ , derived from multiplication of traditional pistachio crop coefficients (Farshi *et al.*, 1995) by their corresponding  $ET_o$  values. In this Fig., maximum observed  $ET_a$  have been illustrated in kinds of vertical narrow lines, to show the spatial fluctuations of  $ET_a$  in Bahadoran pistachio orchards. Fig. 4. also shows cumulative seasonal and annual  $ET_a$  maps of Bahadoran pistachio orchards, along with their histograms. Annual pistachio water use ranged from 41.2 to 1605.9mm, with average and standard deviation of 791.7 and 392.6mm, respectively. Similarly, seasonal pistachio water use ranged from 32.3 to 1168.3mm, with average and standard deviation of 556.2 and 284.7mm, respectively. Based on the map histograms, more than 50% of the study areas have had annual  $ET_a$  of 680 to 1200mm, and seasonal  $ET_a$  of 430 to 830mm. Total  $ET_o$  and  $ET_c$  of the same period were 1688 mm and 1200mm, only 5% and 3% larger than the upper range of pistachio water use, respectively. Slight differences between  $ET_c$  and the maximum pistachio water use confirms the findings of Goldhamer *et al.* (1985) that pistachio can use large amounts of water under non-stressed conditions. On the other hand, the difference between Bahadoran pistachio  $ET_c$  (1200mm) and its average water use (556mm) can be the consequence of water or-and salinity stresses in the studied region, as further will be discussed in this paper. However, the SEBAL results reveal that an annual average of 792mm of irrigation water has been used by pistachio trees through the evapotranspiration process from the soil surface and canopy cover. It also should be noted that evaporation from soil surface may account for a significant portion of pistachio  $ET_a$ , as surface irrigation is the main irrigation method in this region. To validate the SEBAL annual results, components of the water balance equation were quantified in the large irrigation district scale of Bahadoran pistachio orchards.

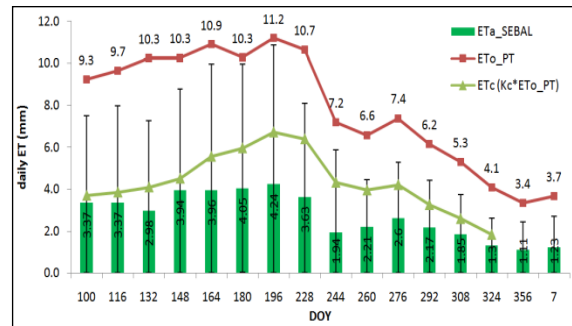
**Cumulative irrigation depth:**

Statistics of Yazd water resource research office indicate that volume of 35.57 MCM of water pumps annually by deep irrigation wells and releases to 5728 ha of Bahadoran pistachio orchards. Considering the averages of pistachio tree row spacing (8.0m) and wetted width of irrigation borders (4.0m), cumulative depth of applied water would be 1242mm.

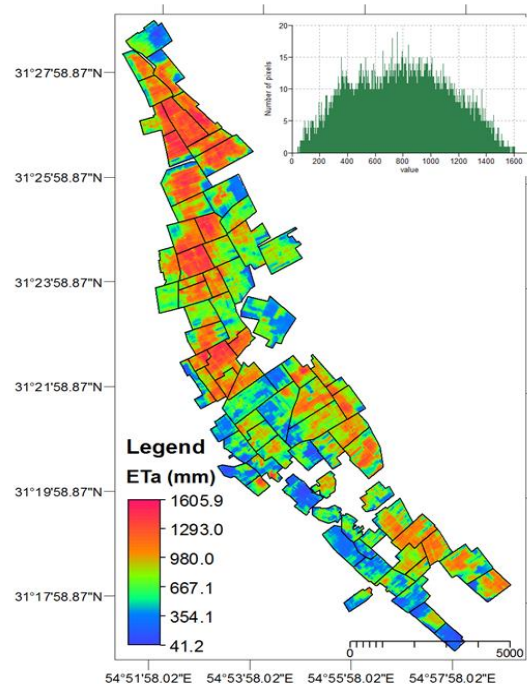
Furthermore, annual precipitation is 84.2mm that included in the water balance analysis.

**Deep percolation:**

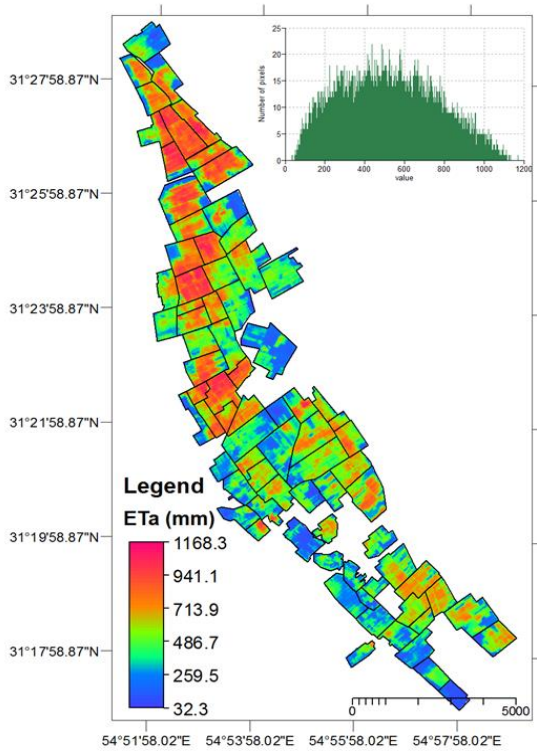
To quantify average deep percolation of Bahadoran pistachio orchards, soil electrical conductivities ( $EC_e$ ) of 0 to 120 cm soil profile and the irrigation water salinities ( $EC_{iw}$ ) were taken in the representative points and analyzed, as well. Fig. 5 compares the averages of soil and water salinities. In this Fig., maximum and minimum observed values have been illustrated in kinds of vertical narrow lines, to show their domains and the spatial fluctuations of salinity in sampled Bahadoran pistachio orchards.



**Fig. 3.** Daily changes of  $ET_a$  (SEBAL results),  $ET_o$  (based on Priestly-Taylor method) and  $ET_c$  (multiplication of pistachio  $K_c$  by  $ET_o$ ) for Bahadoran area.

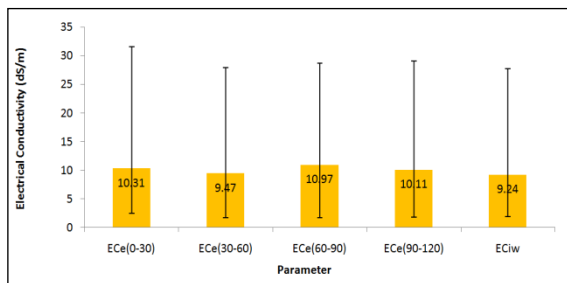


**A.** Annual (April 2015 to March 2016).



B. Seasonal (April 2015 to Oct. 2015).

**Fig. 4.** Seasonal and annual  $ET_a$  maps of Bahadoran pistachio orchards along with their histograms.



**Fig. 5.** Averages of soil and water salinities and their fluctuations in the representative points of Bahadoran pistachio orchards.

Measured  $EC_e$  of the 0 to 120cm soil profile ranged from 1.73 to 31.6dS·m<sup>-1</sup> with the average of 10.21dS·m<sup>-1</sup>. While, the electrical conductivity of irrigation water in the corresponded sampled orchards ranged from 1.87 to 27.7dS·m<sup>-1</sup> with the average of 9.24dS·m<sup>-1</sup>. Based on the methodology described in this paper the leaching fraction (LF) was estimated through measurements of soil and irrigation water salinities. In this approach, spatial changes of leaching fraction depend on the average root zone soil salinity, as well as their corresponding irrigation water salinities.

Estimations show that LF of Bahadoran pistachio orchards ranges from 3% to 65% (standard deviation= 19%) with average of 28%. On the other hand, assuming a soil salinity threshold of 8.0dS·m<sup>-1</sup> for pistachio (Ferguson *et al.*, 2002), the average leaching requirement estimated using equation 9 in FAO (1985) would be 23%, which is smaller than the estimated average LF of Bahadoran pistachio orchards. Generally speaking, the present amount of applied water in Bahadoran region seems to be adequate to leach the salts down to the root zone. Similar finding was previously reported by the authors in another case study, where the measured LF and estimated LR were 53% and 43%, respectively (Rahimian *et al.*, 2014). But however, this conclusion depends on the irrigation water salinity as well as per irrigation applied depths which can change from a field to another field. Considering an average LF of %28, deep percolation was predicted by multiplying the average irrigation depth (1242mm) by 0.28.

*Pistachio*  $ET_a$ , as the residual of water balance equation:

Hence, the change in soil moisture ( $\Delta S$ ) was assumed to be negligible during the pistachio growing season. Using the above mentioned information on irrigation depth, precipitation and deep percolation, annual pistachio  $ET_a$  can be estimated as 978mm, as the remainder of water balance equation (see Table 3.). Considering the SEBAL-based annual estimate of pistachio  $ET_a$  for the same region (792mm), a SEBAL under-estimation of 19% can be deduced in this case study. A possible reason for this significant difference between SEBAL results and the water balance estimates is that water balance method has over-estimated pistachio  $ET_a$ . This reason appears to be probable due to the uncertainties involved in deep percolation (DP) parameter. DP is the product of leaching fraction estimates through the methodology described by Ayers and Westcot (1989). Therefore, uncertainties involved in the DP are correlated with the leaching fraction estimates. In this method, average  $EC_e$  of the top 1.20m of soil layer (as an estimate of pistachio rooting depth) was used to calculate leaching fraction of beneath pistachio root zone.

In such a manner, root depth plays important role by altering the average soil salinity and consequently, the leaching fraction. Meanwhile, lack of soil salinity data at depths below 1.2m could cause problems for precise estimation of leaching fraction beneath the pistachio root depth. Moreover, a sensitivity analysis on the mentioned water balance equation indicate that an increase of 1% in leaching fraction parameter would yield an increase of 12mm in deep percolation and a decrease of 12mm in evapotranspiration estimate.

Assuming that SEBAL estimate is accurate, 64% of applied irrigation water was used through pistachio tree evapotranspiration process in Bahadoran region.

Moreover, averaged annual released water to the pistachio orchards seemed to be adequate to leach the salts down to the root zone. More studies need to be conducted with sensors installed at depth below 1.2 m to obtain a better understanding of deep percolation process as well as pistachio root water uptake.

**Table 3.** Quantification of water balance components in Bahadoran pistachio orchards (from April 2015 to March 2016).

Irrigation, I (mm)	Precipitation, P (mm)	Deep Percolation*, DP (mm)	Surface Runoff, SR (mm)	Soil moisture changes ( $\Delta S$ )	Evapotranspiration**, ET (mm)
1242	84	348	0	~0	978

\* Multiplication of cumulative irrigation depth and the average leaching fraction (%28)

\*\* As the remainder of water balance equation ( $ET=I+P-DP-SR-\Delta S$ ).

**Conclusion**

This study was conducted in a 2015-2016 experimental year to estimate annual water use of mature pistachio trees in Bahadoran region in central Iran. The required irrigation water is mainly pumped by deep wells. Annual pistachio evapotranspiration was first estimated by running the Surface Energy Balance Algorithm for Land (SEBAL) model, through Landsat 8 satellite data along with climatic parameters and ground-based ancillary data. Finally, the SEBAL estimate of annual water use evaluated by performing water balance analysis over the large scale of Bahadoran plain irrigation district. The water balance  $ET_a$  estimate was 19% larger than the SEBAL-based  $ET_a$  due to the uncertainties involved in estimation of deep percolation and leaching fraction. Generally speaking, the released amount of irrigation water to the Bahadoran region seems to be adequate to leach the salts down to the pistachio root zone. Obviously, the latter result depends on the irrigation water salinity as well as per irrigation applied depths which changes from a field to another field and may cause to over or under irrigation of the pistachio trees. Such possible under or over irrigations were demonstrated through the fluctuations of leaching fraction (3% to 65%), root zone soil salinity (1.73 to 31.6dS·m<sup>-1</sup>) and consequently, the pistachio yield.

Based on the latest statistics of Yazd province agricultural organization (2016) the yield of Bahadoran pistachio trees varied from 500 to more than 4200kg·ha<sup>-1</sup> (average of 1550kg·ha<sup>-1</sup>), mostly due to fluctuations of soil and irrigation water salinities along with depths of applied water and other practices. Considering the averages of pistachio yield, applied water and actual evapotranspiration, two averages of 0.12 and 0.20kg·m<sup>-3</sup> obtain for water use efficiency and evapotranspiration use efficiency of Bahadoran pistachios, respectively. These values may satisfy most of Bahadoran pistachio growers, but it seems to be inextensible to the entire Bahadoran plain. The reason for this uncertainty can be found in high fluctuations of pistachio yields as the consequence of irrigation water salinities and leaching fractions, as demonstrated above. However, continued irrigations may worsen the condition in the future to a point when agricultural production in the region is not economically viable anymore.

**Acknowledgment**

This research was supported by the Iranian National Salinity Research Center. Authors of this manuscript would like to appreciate from Mr. Nikkhah, Mr. Fallah, Mr. Soltani, Mr. Shiran, and Mrs. Besharat for their assistance in conducting this research as well as laboratory analysis. Authors also appreciate from Dr. Beyrami for manuscript revision.



## References

- Ayres RS, Westcott DW.** 1985. Water Quality for Agriculture. Irrigation and Drainage Paper No. **29**, Rev. 1, FAO, Rome.
- Bastiaanssen WGM, Menenti M, Feddes RA, Holtslang AA.** 1998. A remote sensing surface energy balance algorithm for land (SEBAL): 1. Formulation. *Journal of Hydrology* **212-213**, 198-212.
- Cheraghi SAM, Hasheminejad Y, Rahimian MH.** 2009. An overview of salinity problem in Iran: assessment and monitoring technology. In: Advances in the assessment and monitoring of salinization and status of Biosaline agriculture. *World Soil Resources Reports No. 104*, FAO, Rome, ISBN: 978-92-5-106439-9.
- FAO.** 1985. Water quality for agriculture. Ayers, R. S., & Westcott, D. W. (Eds), FAO Irrigation and Drainage Paper 29 Rev. 1, Food and Agriculture Organization of the United Nations, Rome, Italy.
- FAO.** 2017. FAOSTAT. Accessed on Jan. **20**, 2017 at: <http://faostat3.fao.org/faostat-gateway/go/to/download/Q/QC/E>.
- Ferguson L, Beede RH, Freeman MW, Haviland DR, Holtz BA, Kallsen CE.** 2005a. Pistachio production manual. Fruit and Nut Research and Information Center, 4th Ed University of California, Davis CA.
- Ferguson L, Polito V, Kallsen C.** 2005b. The pistachio tree; botany and physiology and factors that affect yield. Pistachio production manual, 4th ed Davis, CA, USA, University of California Fruit & Nut Research Information Center 31-39.
- Ferguson L, Poss J, Grattan S, Grieve C, Wang D, Wilson C, Donovan T, Chao C-T.** 2002. Pistachio rootstocks influence scion growth and ion relations under salinity and boron stress. *Journal of the American Society for Horticultural Science* **127**, 194-199.
- Ferguson L, Poss JA, Grattan SR, Grieve CM, Wang D, Wilson C, Donovan TJ, Chao CT.** 2002. Pistachio rootstocks influence scion growth and ion relations under salinity and boron stress. *Journal of the American Society for Horticultural Science* **127**, 194-199.
- Ferguson L.** 2003. Pistachio production year book. Davis University.
- Ghahraman B, Taghvaeian S.** 2008. Investigation of annual rainfall trends in Iran. *Journal of Agricultural Science and Technology* **10(1)**, 93-97.
- Gijón MC, Guerrero J, Couceiro JF, Moriana A.** 2009. Deficit irrigation without reducing yield or nut splitting in pistachio (*Pistacia vera* cv *Kerman* on *Pistaciaterebin thus* L.). *Agricultural Water Management* **96**, 12-22.
- Gijón MDC, Gimenez C, Perez-López D, Guerrero J, Couceiro JF, Moriana A.** 2011. Water relations of pistachio (*Pistacia vera* L.) as affected by phenological stages and water regimes. *Scientia Horticulturae* **128**, 415-422.
- Goldhamer DA, Beede BH.** 2004. Regulated deficit irrigation effects on yield, nut quality and water-use efficiency of mature pistachio trees. *Journal of Horticultural Science & Biotechnology* **79(4)**, 538-545.
- Goldhamer DA, Beede R, Moore JM, Weinberger G, Menezes J.** 1983. Water use requirements and physiological response to water stress in pistachio. Annual report of the California Pistachio Commission, Crop Year 1982-1983, pgs. 53-57.
- Goldhamer DA, Kjelgren R, Beede R, Moore JM, Menezes J, Weinberger G.** 1984. Physiological response of pistachio to severe water stress. Annual report of the California Pistachio Commission, Crop Year 1983-1984, pgs. 44-47.
- Goldhamer DA, Kjelgren R, Beede R, Williams L, Moore MJ, Lane J, Weinberger G, Menezes J.** 1985. Water use requirements of pistachio trees and response to water stress. Annual report of the California Pistachio Commission, Crop Year 1984-1985, pgs 85-92.
- Goldhamer DA.** 2005. Tree water requirements and regulated deficit irrigation. In: Pistachio Production Manual, Ferguson, L. (Ed.), 2005, University of California, pgs 103-116.

- Iniesta F, Testi L, Goldhamer DA, Fereres E.** 2008. Quantifying reductions in consumptive water use under regulated deficit irrigation in pistachio (*Pistacia vera* L.). *Agricultural Water Management* **95**, 877-886.
- Kamali A, Owji A.** 2016, Agro-ecological requirements for growing pistachio trees: A Literature Review, *Elixir Agriculture* **96**, 41450-41454.
- Kanber R, Yazar A, Onder S, Koksall H.** 1993. Irrigation response of pistachio (*Pistacia vera* L.). *Irrigation Science* **14**, 7-14.
- Karimi HR, Ebadi A, Zamani Z, Fatahi R.** 2011. Effects of water salinity on growth indices and physiological parameters in some pistachio rootstocks. *Journal of Plant Nutrition* **34(7)**, 935-944.
- Mokhtari MH.** 2005. Agricultural Drought Impact Assessment Using Remote Sensing. (A Case study Borkhar district -Iran). MSc thesis, ITC, the Netherland.
- Ozden K, Alayunt F.** 2006. The determination of some physical properties of *Pistachio vera* L. *Pakistan Journal of Biological Sciences* **9**, 2612-2617.
- Poormohammadi S, Rahimian MH, Taghvaeian S.** 2012. Applying remotely-sensed energy balance models in Iran: potentials and limitations, In *Remote Sensing and Hydrology*, Neale C. M. U. & Cosh M. H. (Eds.), IAHS Publ. 352, ISBN 978-1-907161-27-8, 141-144.
- Rahimian MH, Taghvaeian S, Nouri MR, Tabatabaei H, Mokhtari MH, Hasheminejad, Y, Neshat E.** 2014, Estimating Pistachio Evapotranspiration Using MODIS Imagery: A Case Study from Ardakan, Iran. *World Environmental and Water Resources Congress 2014*, ASCE, USA: pp. 1784-1794.  
DOI: 10.1061/9780784413548.177.
- Richards LA.** 1954. Diagnosis and improvement of saline and alkali soils. U.S. Dept. of Agriculture Handbook **60**. 160 pp.
- Steduto P, Hsiao TC, Fereres E, Raes D.** 2012, Crop Yield Response to Water. FAO Irrigation and Drainage Paper 66. By Rome, Italy: Food and Agriculture Organization of the United Nations (2012) pp. 500, ISBN 978-92-5-107274-5.
- Swart PK.** 2004. Water Samples and Evaporation Estimates Interim Report, University of Miami Miami.
- Taghvaeian S, Neale CMU.** 2011. Water balance of irrigated areas: a remote sensing approach. *Hydrological Processes* **25**, 4132-4141.