



Hydro-chemical characterization of an aquatic ecosystem water of El Kala national park (Case of Oubeira Lake, Northeast Algeria)

Warda Boumaraf^{*1}, Rachid Djamai¹, Nacira Djabali²

¹Laboratory of Soil and Sustainable Development, Departement of Biology, Faculty of Sciences, Badji Mokhtar University, Annaba, Algeria

²Department of Biology, Faculty of Sciences, Chadli Ben Djedid University, El-Tarf, Algeria

Key words: Chemical facies, Dissolved oxygen, Irrigation, Oubeira lake, Water

<http://dx.doi.org/10.12692/ijb/11.1.59-67>

Article published on July 11, 2017

Abstract

The endorheic Oubeira lake is located in El Kala national park which is ranked seventh of eight national protected parks in the north of Algeria, a shallow lake considered as a wetland of international importance particularly as waterfowl habitat. It receives waste water from small towns which is used for agricultural activities during dry seasons. The objective of this work is devoted to the physico-chemical data analysis of water drawn on the lake's perimeter. These analyses are concerned the parameters of quality measured *in-situ* using field's multi-parameter (temperature, pH, electrical conductivity, oxydo-reduction potential and dissolved oxygen), and at the laboratory (chlorides was done by titrimetry method, bicarbonate were carried out by sulfuric acid and sulphate by BaCl₂ gravimetric method, Cations such as calcium and magnesium were made by complexometry, while sodium and potassium by atomic absorption spectrometry) according to a network of monitoring 15 water points. The results of the hydrochemical study indicate that the lake's water presents an average mineralization (electrical conductivity < 1000 µs/cm) and a pH slightly alkaline. According to Piper diagram, the two dominant chemical facies are chloride magnesium and magnesium bicarbonate respectively with rates of 80% and 20%. For irrigation, the water of the study area presents no risk on cultures; it is of good quality following Richard's diagram.

*Corresponding Author: Warda Boumaraf ✉ boumaraf_warda@yahoo.com

Introduction

El-Kala national park is located at the extreme North-East of Algeria in the region of El-Taref (Ouelmouhoub, 2005; Grimes, 2005) (Fig. 1). This integral reserve extends over an area of 76 438 ha, or 26% from the region's total surface (Bouazouni, 2004). The park represents a reservoir of biodiversity in the mediterranean, the faunistic and floristic richness (Stevenson *et al.*, 1988; Samraoui andde Belair, 1997).

Mediterranean lakes and particularly those of North Africa know a qualitative and quantitative degradation, resulting from natural constraints (precipitation, flows) and Anthropogenic (surveys, wastes). This degradation had consequences on the economic development of certain areas (Alayat, 1991). The Oubeira lake, which was maintained since the quaternary, was drained completely at the end of the summer 1990, following the important pumping intended for the supply of drinking water and for a

sequence of dry years. Consequently, the hydrous potential even if it is sufficient, it is not inexhaustible (Alayat, 2013).

The quality of water plays an important role in the biological, physical and chemical processes that occur in the aquatic environment (Roux, 1987). The present study aims to contribute the characterization of Oubeira's lake water quality, based on physico-chemical analysis through the determination of some parameters.

Materials and methods

Study area

The Oubeira lake, with a surface of 2200 ha, is the subject of this study, located in El Kala national park which is situated in the extreme North east of Algeria 36°51'N - 8°23'E, bordering Tunisia (DGF, 2003) (Fig. 1). It has an essentially rainfed power supply, the most important tributaries are the vales of Dement Er Rehan, Degrah and Bouhchicha.

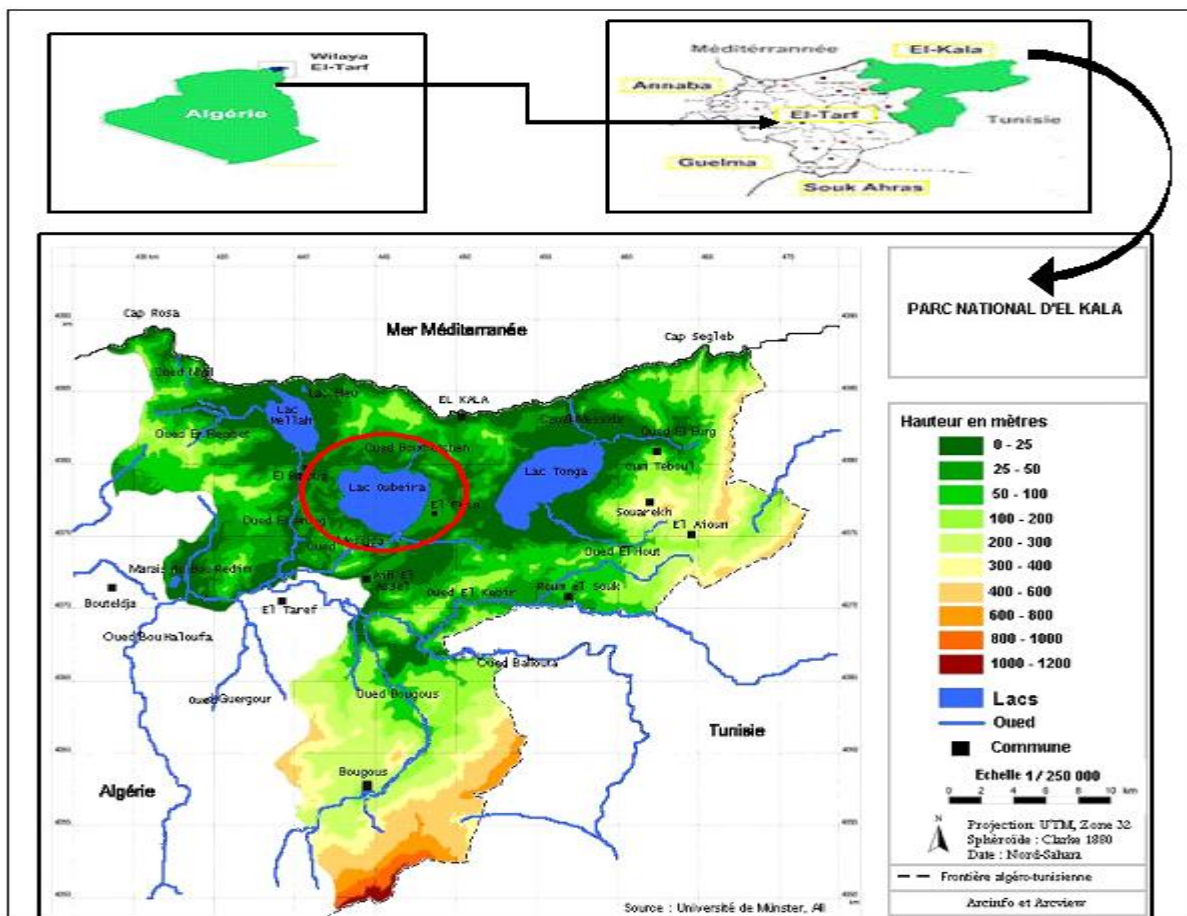


Fig. 1. Geographical situation of El Kala national park (Source: Hamouda, 2013) Study Area.

The lake is located in the center of a watershed of 9800 ha, to a depth of 4 m; it is limited by the Djebel Bou Merchène in Northeast, and bordered by Mellah Lake in the Northwest and by the Northern ridges in the North (Messerer, 1999).

The Oubeïra lake, with El Kala region are located in the sub-humid Mediterranean climate characterized by a dry season from May to September, during which a rain deficit is registered, and a wet season which extends from October to April, with permanent winds to Northwest dominance.

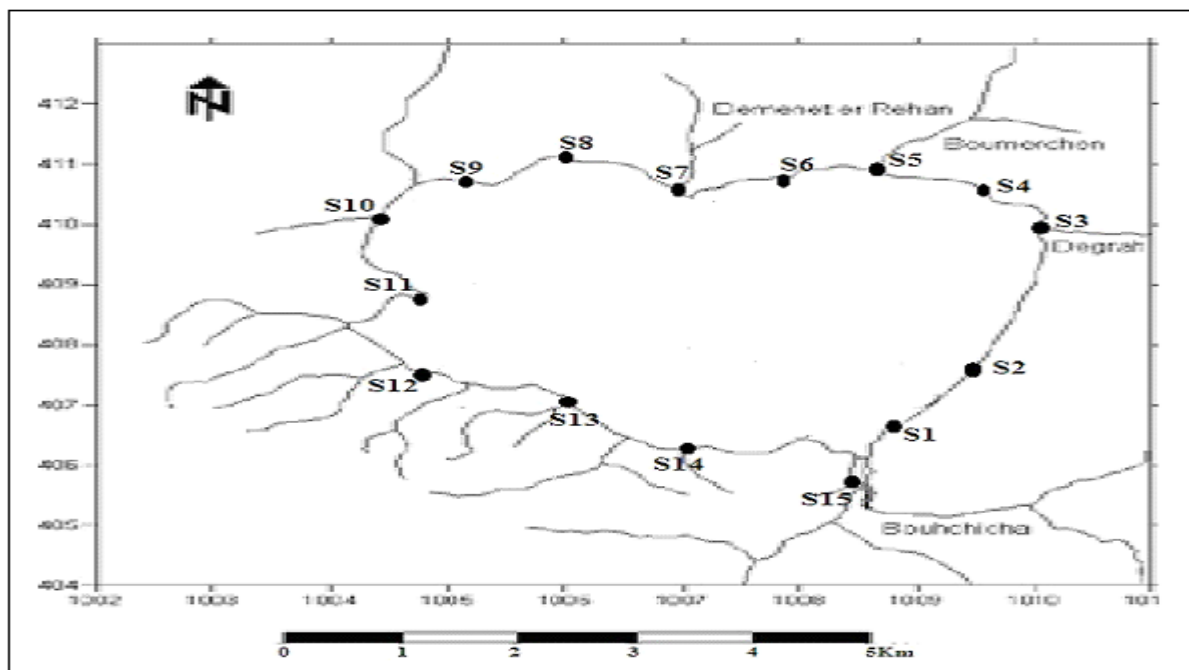


Fig. 2. Location map of the study area and sampling sites.

Choice of stations and sampling

The choice of stations was made in a rational way in order to have a good estimate and follow the spatial evolution of the physico-chemical quality of water of 15 stations on all the perimeter of the Oubeïra lake. Water samples were collected in the period of May 2016 (Fig. 2).

Analytical techniques

In-situ measurements

Five physico-chemical parameters (temperature, the hydrogen potential, the oxydo-reduction potential, the electrical conductivity and the dissolved oxygen) were measured *in-situ* using field's multi-parameter.

Analysis of chemical elements

Chemical analyzes were carried out on the main elements responsible for the mineralization of water, called major elements: (Cl^- , HCO_3^- , SO_4^{2-} , Mg^{2+} , Ca^{2+} , Na^+ , K^+) which were analyzed after filtration at the

laboratory of Badji Mokhtar University, Annaba, Algeria, according to the standard techniques of Rodier *et al.* (2009).

Dosage of Chloride (Cl^-) was done by titrimetry (Mohr method). The bicarbonates (HCO_3^-) were carried out by sulfuric acid, and sulfates (SO_4^{2-}) by BaCl_2 gravimetric method. Cations such as calcium and magnesium (Ca^{2+} , Mg^{2+}) were made by complexometry, while sodium and potassium (Na^+ , K^+) by atomic absorption spectrometry.

The chemical facies of waters is determined by software DIAGRAM of Avignon University (France).

Results and discussion

The physico-chemical characteristics of water

Temperature ($T^\circ\text{C}$)

Temperature is one of the physical parameters most sensitive to natural changes (Rodier, 1984).

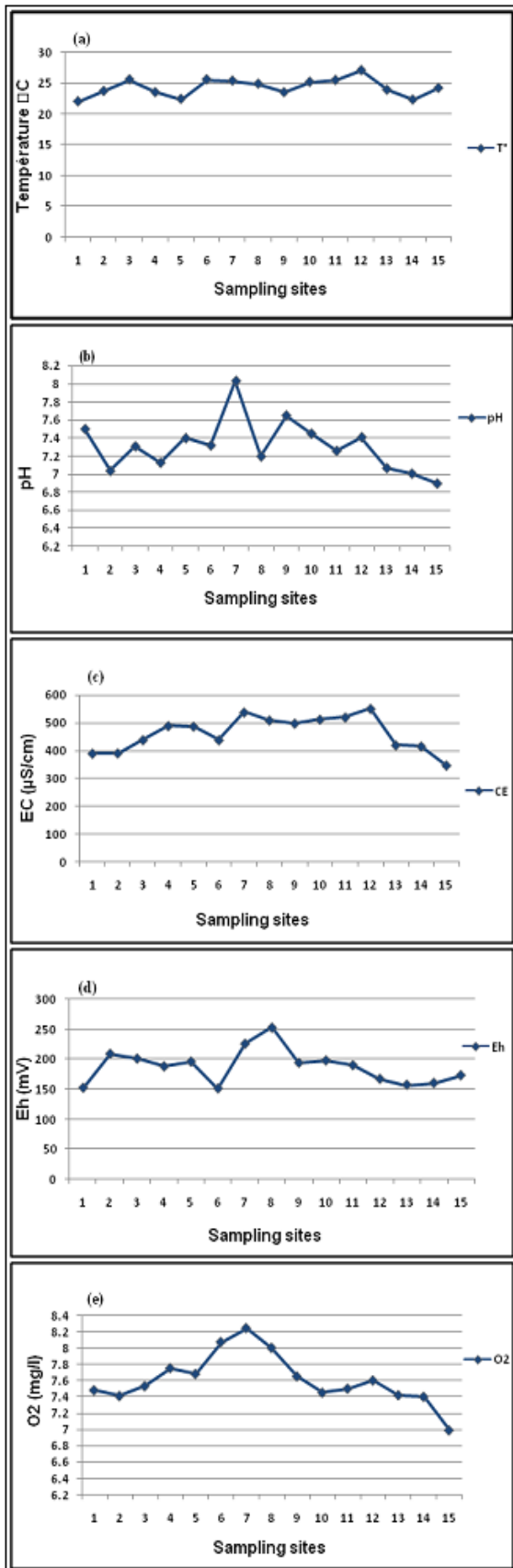


Fig. 3. Spatial Variation of : temperature (a), pH (b), electrical conductivity (c), the redox potential (D) and dissolved oxygen (e), of Oubeira lake water.

The temperature curve shows a similar evolution in all sampled stations, ranging from 22 °C to 27.1°C with an average of 24.34 °C (Fig. 3a). This temperature affects the density, viscosity, solubility of gases in water, dissociation of dissolved salts, chemical and biochemical reactions, development and growth of living organisms in water (WHO, 2004).

Hydrogen potential (pH)

The pH of surface water depends mainly on existing chemical compounds, photosynthesis and respiration of organisms. However, the presence of free carbon dioxide or humus lowers the pH (Chapman and Kimstach, 1996; RCWP, 2007). During our measurement period, the variation of PH shows a balance on all selected sites (Fig. 3b). The measured values oscillate between 6,90 and 8.03 pH units, indicating a slight alkalinity favorable to fish life (Belgriri, 1993).

Electrical conductivity (EC)

The electrical conductivity provides information on the degree of water mineralization (Derwich *et al.*, 2010). The electrical conductivity values are very close at all stations and have an average mineralization (conductivity <1000 µS/cm) (Vierling, 2008). The conductivity is also a function of water temperature, it is more important when the temperature increases (Dussart, 1966); it is the case of (S12) with a value of 551 µS/cm (Fig 3c).

Oxydo-reduction potential (Eh)

According to the figure 3 (Fig. 3d), Oubeira Lake water have an Redox potentiel (Eh) between 150 mV (S6) and 253 mV (S8), which are slightly aerated water. The highest mean values of Eh reveal that the environment is well ventilated and the ecological conditions are favorable to oxidation. Low values indicate that the medium is low in oxygen and may contain reducing agents capable of combining with oxygen which may eventually enter it (Harch-Rass *et al.*, 2012).

The dissolved oxygen (DO)

The dissolved oxygen content in water is closely related to the thermal regime of the lake (Villeneuve *et al.*, 2006).

The average dissolved oxygen content of water in Oubeira Lake is between 6 and 8 mg/l (Fig. 3e). This can be explained by the dilution of the water; moreover, the photosynthetic activity of spring

enriched this water with dissolved oxygen (Belaud, 1996). These results do not show any significant variations and the lake's water are then well oxygenated (I.B.G.E, 2005).

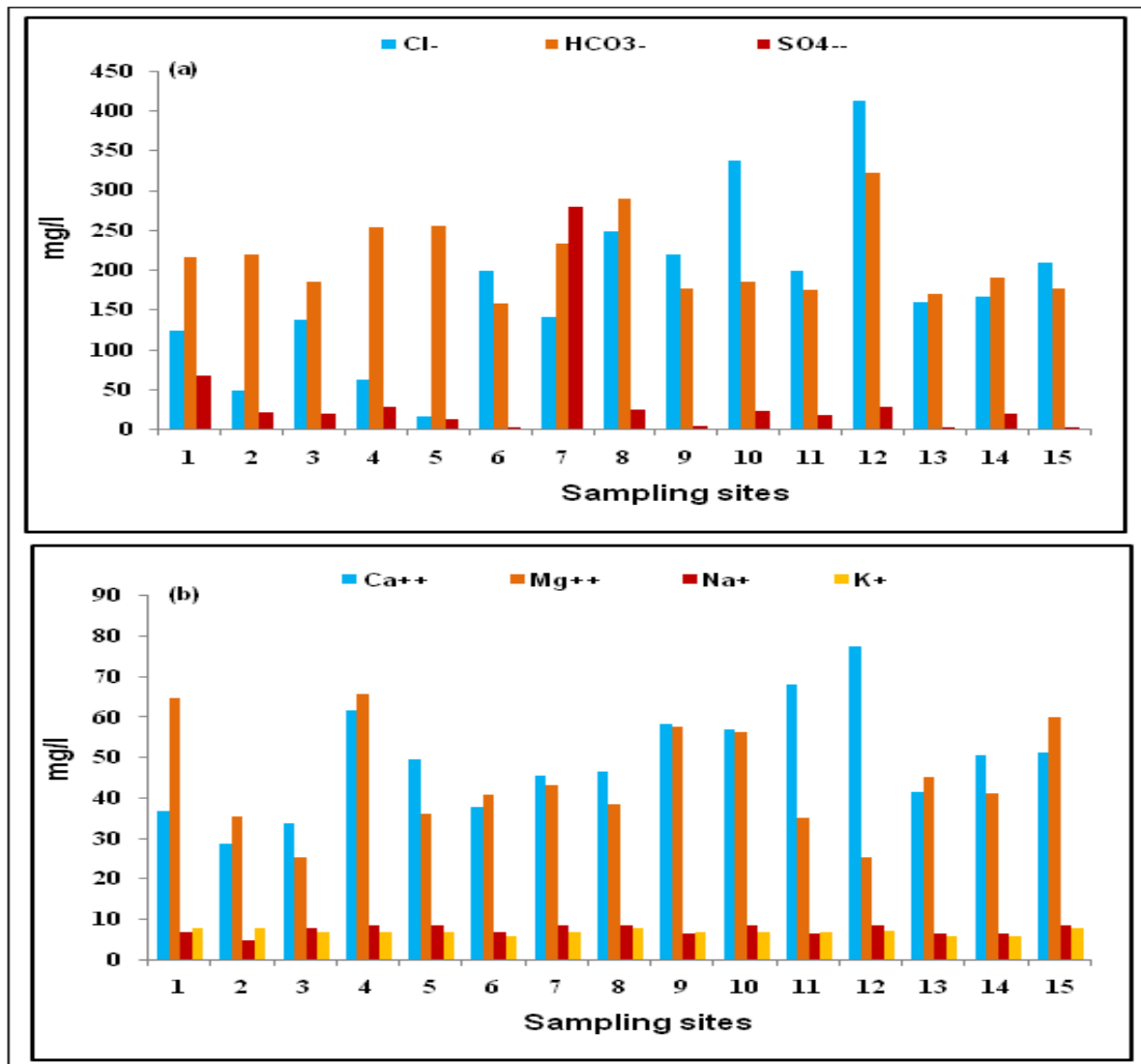


Fig. 4. Concentrations of the major chemical elements of Oubeira Lake water.

The major chemical elements

The results obtained show a great variation in the concentrations of the major elements such as the cations (Ca^{++} , Mg^{++} , Na^+ , K^+) and the anions (Cl^- , SO_4^{2-} , HCO_3^-) (Fig. 4). The chloride content (Cl^-) generally increases with the degree of water mineralization. The measured levels are below the surface water standard (200 mg/l) at all sampling stations except for sites (S10) and (S12) (Fig. 4a) where these levels reached a maximum of 337,25 mg/l and 411,8 mg/l respectively. These chloride ions may be related to pollution from urban discharges into the lake.

The bicarbonates contents are very variable. They range from 158,6 mg/l (minimum observed value) at the site (S6) and 322,08 mg/l at the site (S12) (maximum observed value) (Fig. 4a). Concentrations of bicarbonates (HCO_3^-) in natural waters are directly related to pH of water, temperature, dissolved CO_2 concentration and the lithological nature of soil.

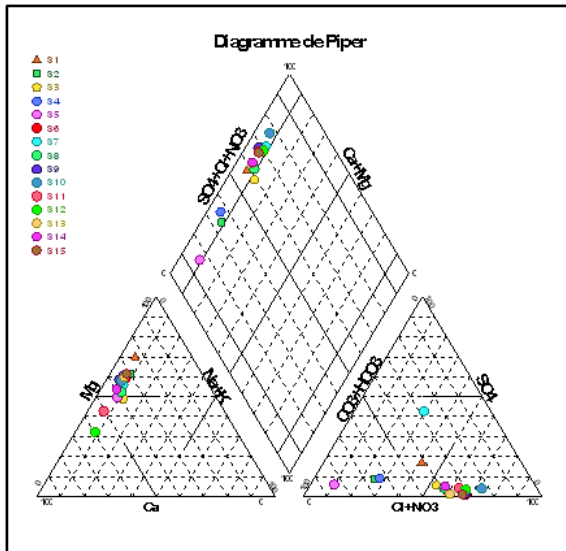


Fig. 5. Chemical facies of the Oubeira lake water according to Piper’s diagram.

Sulfate (SO_4) contents in Oubeira Lake water at the different sites are very low except for the site (S7) which reaches a high value (279.84 mg/l) and exceeds the standards recommended by the WHO(250 mg/l) (Fig. 4a).

It is the result of wastewater discharge that comes from the Meridima village (commune of El Kala) that the Oued Demenet Er Rehan welcomes directly without any prior treatment.

The mean concentration of sodium and potassium of water are very low and do not exceed standards (Fig. 4b). This water also has relatively an average contents of calcium (28.8 to 77.6 mg/l) and magnesium (25.44 to 64.8 mg/l) relative to the overall mineralization.

Hydrochemical facies

Diagram of Piper

This type of diagram allows you to represent several water samples simultaneously. It is composed of two triangles, representing the cationic facies and the anionic facies, and a rhombus synthesizing the global facies.

According to figure 5, the triangle of the anions shows that chlorides represent the most abundant element. With regard to the cation triangle, the magnesium ions mark all the samples.

The representation of the major ion contents on the Piper diagram (Piper, 1944), shows the dominance of two chemical facies (Fig. 5):

Magnesium bicarbonate facies: represents 20% of the lake’s water at the sites (S2, S4 and S5). This type of facies is observed mainly in the East of the Oubeira Lake, this facies generally represents the weakly mineralized water.

Chloride magnesium facies: represents the majority of samples with 80% of the sites (S1, S3, S6, S7, S8, S9, S10, S11, S12, S13, S14 and S15). It is the facies the most dominant in the study area. It is observed in the North, South and Northwest of Oubeira lake view abundant presence of the Numidia clays and lake water is moderately mineralized.

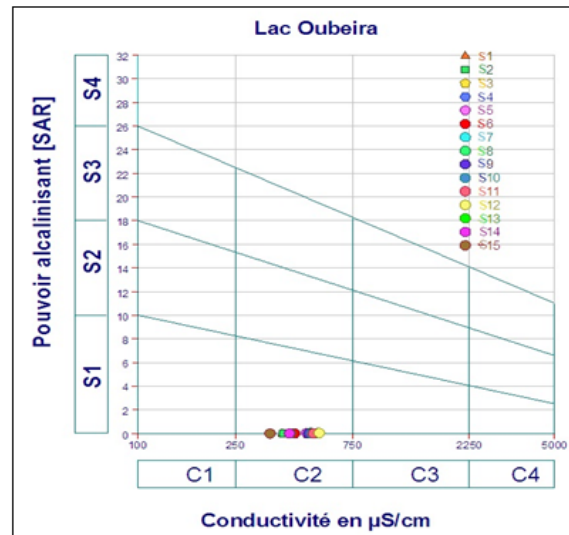


Fig. 6. Classification of water irrigation in Oubeira lake according to Richards’s diagram.

Ability of waterto the irrigation

Diagram of Richards

Agriculture is the most dominant activity in Oubeira Lake watershed, especially the groundnut culture and vegetable cultures that occupy the Eastern part. The salinization and alkalization of waters are the main risks to irrigation water. In order to evaluate these two risks, the results of the physicochemical analyzes were projected on Richards’s diagram; the deferral of the results on this diagram allows us to classify the different types of water irrigation and to indicate the various uses according to the tolerance of cultures.

On this graphic representation, the risk of salinity is estimated by the conductivity expressed in $\mu\text{S}/\text{cm}$. Whereas the risk of soil alkalization is quantified by S.A.R (Sodium Adsorption Ratio) (Nishanthiny *et al.*, 2010; Salman and Elnazer, 2015). SAR is given by the formula below; it is used in combination with the electrical conductivity of water (Wilcox, 1948; Richards, 1954).

$$SAR = \frac{Na^+}{\sqrt{\frac{Ca^{++} + Mg^{++}}{2}}}$$

Where all elements are expressed in meq/l.

The Water can be classified on the basis of SAR in excellent water (SAR <10), good (10-18), doubtful (18-26) and unsuitable (>26) for irrigation (El Nazer *et al.*, 2017). According to Richards's diagram the Oubeira Lake water belonging to class C2S1 (Fig. 6). This class represents the low mineralization water encountered around the lake. Class C2S1 characterizes water suitable for irrigation and can be used without special control for plants with medium tolerance to salts and on soils with good permeability.

Conclusion

The respect for the environment is a major concern in our societies today. In the present work, we carried out the study on the water of Oubeira lake in the El Kala National Park (PNEK), which are used by a large population of the region in some agricultural (peanuts and vegetables). The results of this study show that the water is well oxygenated moderately mineralized. The pH of the lake's water is slightly alkaline and very close to neutrality, which constitutes a value of the criterion of protection for aquatic life. Some major chemical elements of this water exceed the standards recommended by the WHO, Probably due to a degradation of the lake's quality. According to the Richards diagram, the water in Oubeira Lake belonging to the C2S1 class, which characterizes water eligible for irrigation, that is to say water can be used without special control to irrigate medium tolerant plants or on a soil with good permeability.

References

- Alayat H.** 1991. Les eaux superficielles et la nappe phréatique de la plaine d'Annaba. Thèse de Doctorat de l'université de Nancy II, 382 p.
- Alayat H.** 2013. Evolution spatiale des caractéristiques physico-chimiques des eaux du lac Oubeira imposé par les conditions sévères de la sécheresse (extrême Nord-Est Algérien). European Scientific Journal **9(36)**, 564-579.
<http://eujournal.org/index.php/esj/article/view/2254/2137>
- Belaud A.** 1996. Oxygénation de l'eau en aquaculture intensive. Ed Collection Polytech. 207 p.
- Belgiri L.** 1993. Bioécologie de deux espèces de larves *Hyophthalmichty molitrix* Val et *Cyprinus caprio* L. Expérience d'empoisonnement dans le canal de Rocade. Thèse detroisième cycle, Faculté des Sciences. Semlalia Marrakech. 137 p.
- Bouazouni O.** 2004. Study socio-economic PNEK. Regional Project for the development of marine and coastal protected areas in the region of the Mediterranean (UNEP-MedMPA). 50 p.
- Chapman D, Kimstach V.** 1996. Selection of water quality variables. Water quality assessments: a guide to the use of biota, sediments and water in environment monitoring, Chapman edition, 59-126 p.
- Derwich E, Benaabidate L, Zian A, Sadki O, Belghity D.** 2010. Caractérisation physico-chimique des eaux de la nappe alluviale du Haut Sebou en aval de sa confluence avec Oued Fes. Larhyss Journal **8**, 101-112.
- Dussart GBJ.** 1966. Limnology: the study of current waters. Ed. Herman, Paris, 250 p.
- DGF.** 2003. Directorate General for Forestry. Fact Sheet on Ramsar Wetlands, Oubeira Lake Integral Reserve, Wilaya of El Tarf. 40 p.

- El Nazer HA, Salman SA, Elnazer AA.** 2017. Irrigation water quality assessment and a new approach to its treatment using photocatalytic technique: Case study Yaakob village, SW Sohag, Egypt. *Journal of Materials and Environmental Sciences* **8(1)**, 310-317.
<https://www.jmaterenvironsci.com/pdf>
- Grimes S.** 2005. El Kala National Park Marine Area Management Plan (Wilaya of El Tarf), Regional Project for the Development of Marine and Coastal Protected Areas in the Mediterranean Region, 126 p.
- Hamouda S.** 2013. Parcs nationaux, réserves de biosphère et activités agricoles : Enjeux au sein du Parc national d'El-Kala, (Algérie). Thèse de doctorat en Biologie Université Annaba. 303 p.
- Harch-Rass A, El Kharrim K, Belghyti D.** 2012. Physical and chemical analysis of water ramsar sidi boughaba site (Morocco). Sciencelib editions mersenne: Volume 4, n°120607.
- I.B.G.E.** 2005. Brussels Institute for the management of the environment. physico chemical Quality of surface water: general framework, Observatory of the data of the environment: "Water in Brussels". 16 p.
- Messerer Y.** 1999. Étude morpho métrique et hydrographique du complexe lacustre d'El Kala; cas du lac Oubeira et du lac Mellah. Thèse de Magistère; Université Annaba. 123 p.
- Nishanthiny SC, Thushyanthy M, Barathithasan T, Saravanan S.** 2010. Irrigation water quality based on hydro chemical analysis, Jaffna, Sri Lanka. *American-Eurasian Journal of Agricultural & Environmental Sciences*. **7**, 100-102.
[http://www.idosi.org/aejaes/jaes7\(1\)/15.pdf](http://www.idosi.org/aejaes/jaes7(1)/15.pdf)
- Ouelmouhoub S.** 2005. Gestion multi-usage et conservation du patrimoine forestier: cas des subéraies du Parc National d'El Kala (Algérie). Thèse de Science du CIHEAM-IAM Montpellier, France, p. 46-54.
- Ouhmidou M, Chahlaoui A, Kharroubi A, Chahboune M.** 2015. Study of the physico-chemical and bacteriological quality of the barrage Hassan Addakhil of Errachidia (Morocco). *Journal of Materials and Environmental Science* **6(6)**, 1663-1671.
<http://www.jmaterenvironsci.com/pdf>
- Piper AM.** 1944. Graphic procedure in geochemical interpretation of water analyses. *Trans Am Geophys Union* 1944. **25**, 914-923.
- RCWP.** 2007. Report on the control of water pollution in Tunisia 2007. The National Agency for Environmental Protection. Water Pollution Control Network. 39 p.
- Richards LA.** 1954. Diagnosis and improvement of saline and alkali soils. *Agric. Handbook 60*, USDA, Washington D.C, 160 p.
- Rodier J.** 1984. Analyse de l'eau. Eaux naturelles, eaux résiduaires, eau de mer. 7ème édition, Dunod. Paris.
- Rodier J, Legube B, Merlet N.** 2009. L'analyse de l'eau. Eaux naturelles, eaux résiduaires, eau de mer. 9ème édition. Ed. Dunod Paris.
- Roux M.** 1987. The biological analysis of water. International Office for Water. TEC & DOC. Paris. 229 p.
- Salman SA, Elnazer AA.** 2015. Evaluation of groundwater quality and its suitability for drinking and agricultural uses in SW Qena Governorate, Egypt. *Advances in Natural and Applied Science* **9**, 16-26.
<http://www.aensiweb.com/old/anas/2015/May/16-26.pdf>
- Samraoui B, de Belair G.** 1997. The Guerbes-Senhadja Wetlands: Part I. An overview. *Ecology* **28(3)**, 233-250.

Stevenson AC, Skinner J, Hollis GE, Smart M. 1988. The El Kala National Park and Environs, Algeria: An Ecological Evaluation. *Environmental Conservation* **15**, 335-348.
<https://doi.org/10.1017/S0376892900029830>

Vierling E. 2008. *Aliments et boissons : filière et produit*. 3ème édition. Centre régional de documentation pédagogique d'Aquitaine. France. 230 p.

Villeneuve V, Legare S, Painchaud J, Vincent W. 2006. Dynamics and modelling of dissolved oxygen in rivers. *Journal of water* **19(4)**, 259-274.

WHO. 2004. *Guidelines for Drinking-water quality*. 3rd edition, Vol. 1. World Health Organization, Geneva., 110 p.

Wilcox LV. 1948. *The quality of water for agricultural use*. US Dept Agriculture Tech. Bull.1962, Washington DC.