



RESEARCH PAPER

OPEN ACCESS

Diagnostic analysis of pig farms in the North of Côte d'Ivoire: Case of the commune of Korhogo

Seni Kouadio Sylvain^{*1}, Kadjo Vincent¹, Alla Konan Jean Bedel¹, Yao Koffi Sylvanus Aubert², N'glouan Wadjé Jérôme¹, Soro Ouation Souleymane¹, Kouassi Koffi Dongo¹

¹Laboratory Environment Climate Health Engineering and Sustainable Development, Department of Animal Biology/Animale, UFR of Biological Sciences, University of Peleforo Gon Coulibaly, Korhogo, Côte d'Ivoire

²Laboratory of Biobiological and Geological Sciences, Department of Science and Technology, UFR of Medical Sciences, Alassane Ouattara University, Bouaké, Côte d'Ivoire

Key words: Characterization, Pig farming, Constraints, Prophylaxis, Côte d'Ivoire

Received: 19 March, 2026

Accepted: 02 April, 2026

Published: 07 April, 2026

DOI: <https://dx.doi.org/10.12692/jbes/28.4.48-57>

ABSTRACT

This study was carried out with the aim of characterizing pig production for sustainable development of this industry. The work took place in the Poro region, specifically in the commune of Korhogo. A questionnaire-based survey interviewed farmers from 60 pig farms. It revealed that pig farming is practiced exclusively by adult male actors (90%), whether or not they are educated. Ninety Five (95)% of pig farmers started breeding with their own funds and practice it as a secondary activity. The habitats, although cemented, are often equipped with reclaimed roofs (65%). While confinement is common (74%), hygiene remains a major challenge with 81.67% of farms being unsanitary. 5% of the farms surveyed observe a health prophylaxis program. Mixed breeds of pigs (35%) dominate the livestock sector. The animals are fed with agricultural by-products (83.33%). This information collected will serve as a database to develop strategies for the sustainable development of this activity.

***Corresponding Author:** Seni Kouadio Sylvain ✉ senikouadiosylvain48@gmail.com

INTRODUCTION

In Côte d'Ivoire, pig farming, with its 431,389 heads (301,716 traditional and 129,673 modern), represents a modest economic challenge (3% of GDP, or 1% of GDP) despite a production of 11,621 tonnes of meat (MIRAH, 2022). The modernization of livestock farms and the intensification of pig production, although supported by government initiatives, are not yet sufficient to fill the current deficit and, moreover, to achieve the set objectives (Brou *et al.*, 2020), hence the heavy dependence of Côte d'Ivoire on imported animal foodstuffs (MIRAH, 2022). According to FAO (2020), national pork meat needs are estimated at around 60,000 tonnes/year with 80 to 83% of needs covered by imports. Despite all the efforts made, Ivorian pig farming continues to face numerous problems such as supply splits and poor quality of inputs (Porphyre, 2009). Pathologies such as African swine fever (ASF) represent a major danger, with frequent reappearances since 1996, causing considerable economic losses (Jeannin, 2024). However, the soaring cost of inputs and the strong competitiveness of imported meats compared to those produced locally (Angbo-Kouakou *et al.*, 2018) are forcing breeders to abandon their activities. The sector was confronted with the post-electoral crisis of 2010, which shook the country. Furthermore, investment capacities still remain insufficient (Porphyre, 2009; Angbo-Kouakou *et al.*, 2020). These constraints could constitute an obstacle to the revival of the sector and, in turn, reduce the production of pork. Given these multiple constraints, it becomes essential to characterize the different pig farming systems in Côte d'Ivoire and in particular in the commune of Korhogo. Faced with the challenges that hinder the development of local pig farming, the search for concrete solutions becomes a priority. Our study fits into this approach by examining the state of this sector within the municipality of Korhogo. This present work aims to draw up the profile of pig farmers and to understand the management of farms in the commune of Korhogo with the aim of improving local production and the income of breeders.

MATERIAL AND METHODS

Location of the study

This present work was carried out in the commune of Korhogo including different villages and neighborhoods (Fig. 1).

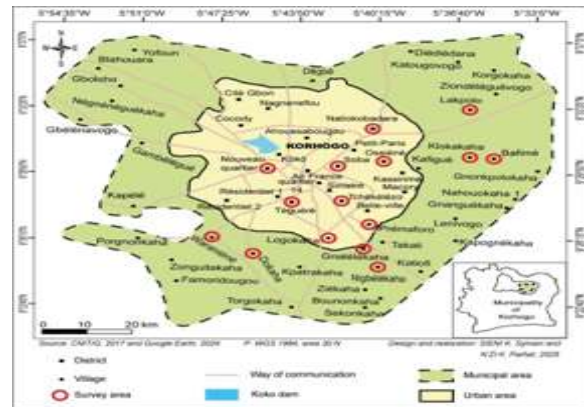


Fig. 1. Map of the commune of Korhogo presenting the different localities surveyed

Survey methodology

The survey sheet was used to collect information on the geographical and administrative position of the study area, to identify the breeder or manager of the farm, to list the species of pig raised, to describe the breeding techniques used, and to identify the problems that pig farmers face. The survey made it possible to collect socio-economic data and on pig breeding practices from breeders. Structured questionnaires, adapted to different literacy levels, made it possible to collect qualitative and quantitative information on the breeders, in particular the management of the herd, their size (staff), the health state of the animals and the diet.

Sampling methods

To carry out this investigation, the Landais non-probability sampling method, which consisted of questioning available breeders on their farm while taking into account the consent of each of them, was used (Landais and Faye, 1986). It took place in the form of a visit to the pigsties in order to glean a certain amount of information relating to the predefined questionnaire. The survey took place over a period from February 3 to April 20, 2025.

Data processing and analysis

The survey area was mapped using Google Earth version 2024 software. Then, the information (qualitative and quantitative variables) was codified for statistical processing. XLSTAT 2014.5.03 software was used for data processing. To do this, a multivariate component analysis, also called principal component analysis, was carried out in order to group individuals with similar characteristics using the ACM and the CAH.

RESULTS

Distribution of pig farms surveyed by locality

The survey was carried out in neighborhoods and villages in the commune of Korhogo and made it possible to identify a total of 60 farms. Among the localities surveyed, Dokaha was the area which contained the greatest number of pig farms (21.67%) while for the other sites, the number of farms varied from 1.67% to 11.67% (Table 1).

Table 1. Distribution of pig farms surveyed by locality

| Neighborhoods and villages | Percentage (%) |
|----------------------------|----------------|
| Ossiéné | 1.67 |
| Soba | 1.67 |
| Nigbélekaha | 3.33 |
| Prémaforo | 3.33 |
| Téguéré | 3.33 |
| Logokaha | 5 |
| Nouveau quartier | 5 |
| Bafimé | 6.67 |
| Gnalélékaha | 6.67 |
| Klokakaha | 6.67 |
| Waraniéné | 6.67 |
| Natiokobadara | 8.33 |
| Tchékélézo | 8.33 |
| Lakpolo | 11.67 |
| Dokaha | 21.67 |
| Total | 100 |

Socio-professional profile of pig farmers

Pig farming in the commune of Korhogo was largely dominated by men. Their number was nine (9) times higher (90% of pig farmers) than that of women. The breeders surveyed were mostly adults (73%) whose ages ranged from 36 to 59 years. To this end, the proportion of married respondents represented four (4) times that of the unmarried, including singles, widowers, divorced people and cohabiting couples estimated at 20% (Table 2). Of the 60 pig farmers,

more than half (62%) have not been educated. Among educated actors, 7% have reached university level. All breeders practiced farrow-to-finish breeding for commercial purposes. Those who started this breeding through personal initiatives, carrying out pig farming as a secondary activity and not belonging to any association of pig farmers represented 95% of the actors. On the other hand, those who carried out pig farming as their main activity, belonged to an association of pig farmers and who started it on the basis of recommendations from others represented 5%.

Table 2. Socio-professional profile of pig farmers

| Variables | Signification | Percentage (%) |
|-------------------------|------------------------------|----------------|
| Age (years) | 18-35 years | 20 |
| | 36-59 years | 73.33 |
| | >60 years | 6.67 |
| Gender | Male | 90 |
| | Female | 10 |
| Marital status | Not married | 20 |
| | Married | 80 |
| Level of study | None | 61.67 |
| | Primary | 18.33 |
| | Secondary | 13.33 |
| | Superior | 6.67 |
| Function | Farmers | 31.67 |
| | Craftsmen | 40 |
| | Stewards | 11.67 |
| | Traders | 16.67 |
| | Pig farming | Main |
| | Secondary | 95 |
| Type of producer | Mixte | 100 |
| Year of experience | From (0-1) years | 11.67 |
| | From (2-4) years | 13.33 |
| | >4 years | 75 |
| Purpose of breeding | Commercial | 100 |
| Motivation | Personal | 95 |
| | Others | 5 |
| | Membership of an association | Yes |
| | No | 95 |
| Professional assistance | No | 98.33 |
| | yes | 1.67 |
| Funding | No | 98.33 |
| | Yes | 1.67 |

Concerning the main functions of these actors, it should be noted that the group of artisans made up of workers, musicians, fishermen, security agents and drivers was the largest with a representativeness of more than a third (40%) of the sample size. In addition to the artisans, the stewards made up of breeders and teachers struggled to make a big name for themselves in this group with an estimate of around 12%. In terms of seniority in this field, 3/4 of

the pig farmers had experience going beyond 4 years. However, 2% of actors have benefited from financial support and professional assistance while the others are abandoned to their own fate (Table 2).

Habitat and breeding method

All the farms surveyed had cemented lateral facades made either of plastered brick or not, or of stone and a concrete floor. In addition to the side facades and the floor, buildings with salvage roofing were nearly double (65%) those covered with new or near-new sheets (Fig. 2). Around 74% of breeders practiced exclusive confinement (stallion) of their animals although a minority (20%) were torn between confinement and wandering (Fig. 3).



Fig. 2. Acquisition lanes

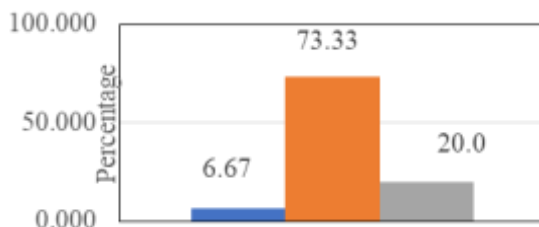


Fig. 3. Breeding mode

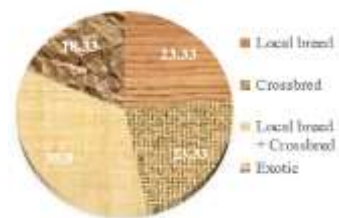


Fig. 4. Distribution of pig races

Distribution of pig breeds found on farms

During this investigation, (04) four groups of pig breeds were identified. Among these, there were the Iberian breeds consisting mainly of traditional pigs (24%), mixed breeds including the Korhogo pig and mixed

breeds resulting from crosses between exotic pigs (23%). Then, 35% of the pigs represented the breed emanating from traditional pig crossing and crossbreeds. As for exotic breeds, made up of Large White, Landrace and Pietrain, they represented 18% (Fig. 4).

Route of acquisition of livestock and breeding associated with pig farming

92% of pig farmers financed their breeding with their own resources (Fig. 5). Pig farmers (17%) associated poultry farming with their activity. This involves the breeding of broilers, local chickens and local guinea fowl (Fig. 6).

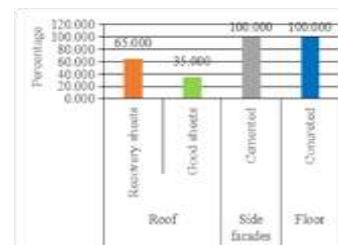


Fig. 5. Habitat aspect



Fig. 6. Associated farms encountered in farms

Size and composition of the herd

52% of the pig farms visited did not have boars. Farms with a number of sows between 1 and 5 are 3 times higher than those without. Pigsties with at least one gilt represented a third of the farms surveyed (24%). 57% of pig farms had fewer than 10 animals (Fig. 7).

Reproduction management

Breeders with reproduction management sheets were under-represented with a contribution not even reaching a tenth (4%) of the actors. Among the farmers surveyed, 14% carried out the first mating of young females when they were between 7 and 9 months old. However, 12% of them culled their parents around 2 to 4 years of age. Among males, 10% of pig farmers bred young boars aged 7 to 10 months.

Pig farmers who performed a double mating annually represented 15% of those who did a single mating. Farms which used boars for an indefinite period

before culling represented 92% compared to those which culled between 2 and 3 years old (Table 3).

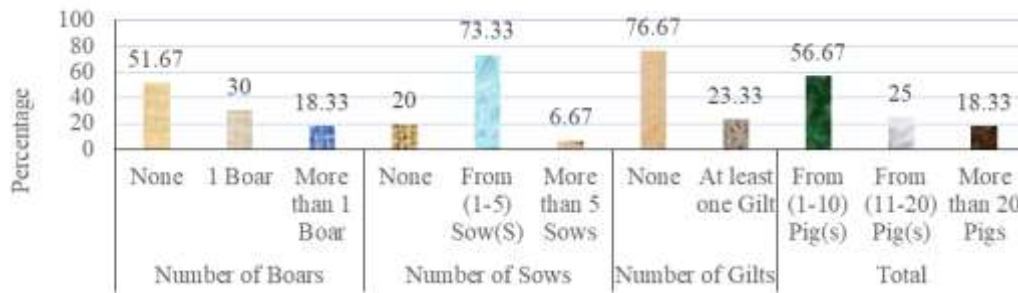


Fig. 7. Size and composition of the pig livestock

Table 3. Reproductive management

| Variables | Signification | Percentage% |
|---|--------------------|-------------|
| Reproduction management sheet | Yes | 3.33 |
| | No | 96.67 |
| Age of first covering | Undetermined | 83.33 |
| | <7 months | 1.67 |
| | From (7-9) months | 13.33 |
| | >9 months | 1.67 |
| Age of young breeding boars | Undetermined | 86.67 |
| | <7 months | 1.67 |
| | From (7-10) months | 10 |
| | >10 months | 1.67 |
| Frequency of coverings carried out/year | 1 time | 85 |
| | 2 times | 15 |
| Culling of sows | Undetermined | 88.33 |
| | 2 to 4 years | 11.67 |
| | 2 to 3 years | 8.33 |
| Boar cull | Undetermined | 91.67 |
| | 2 to 3 years | 8.33 |

Table 4. Health situation of the farm

| Variables | Signification | Percentage (%) |
|---------------------------------|------------------------------|----------------|
| Pediluvium | No | 100 |
| Pigsty environment | Healthy | 18.33 |
| | Unsanitary | 81.67 |
| Maintenance of feeders/drinkers | None | 5 |
| | Rinsing | 88.67 |
| | Washing | 6.67 |
| Equipment maintenance frequency | Daily | 61.67 |
| | Weekly/Monthly | 6.67 |
| | Quarterly | 31.67 |
| Lodge maintenance | Yes | 100 |
| | No | 0 |
| Frequency of lodge maintenance | Daily | 95 |
| | Weekly/Monthly | 5 |
| | Undetermined | 0 |
| Building disinfection | Yes | 25 |
| | No | 75 |
| | None | 38.33 |
| | Ignore | 41.67 |
| Reasons | Expensive and tedious | 20 |
| | Undetermined | 75 |
| | 1 time/day (Rainy season) | 6.67 |
| | 1time/7 days (Dry season) | 0 |
| | Weekly/ Fortnightly/ Monthly | 6.67 |
| | Annual | 8.33 |
| Health prophylaxis program | In case of illness | 3.33 |
| | Yes | 5 |
| | No | 95 |

Feed and daily frequency of feed distribution

Various feeds were used in pig production, with the majority of farmers (83.33%) relying on mixtures of agricultural and agro-industrial by-products associated with swill. As illustrated in Fig. 8, feeding was generally carried out twice daily, in the morning and evening, by 73.33% of the farms surveyed.

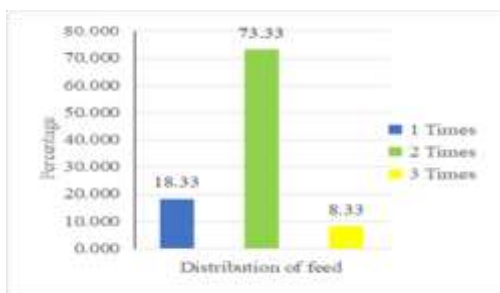


Fig. 8. Daily feed distribution frequency

Health situation of the farm

All the farms that were the subject of this investigation did not have a footbath installed at the entrance to each of them. All the lodges (95%) have been subject to maintenance (sweeping). To this end, the farms visited, presenting a fairly unsanitary immediate environment, constituted approximately four (4) times (81.67%) the number of those which try to maintain remarkable environmental hygiene (Table 4).

Concerning the maintenance of livestock equipment, the main ones being feeders and drinkers, only 6.67% of the actors practiced washing. More than a third of them observed quarterly maintenance of livestock equipment (31.67%). As for livestock buildings, they were disinfected by a quarter of the farmers. A fifth of breeders cited economic and tedious reasons. Those who disinfected their building during a specific period represented 25%. It should be noted that 5% of pig farms had a health prophylaxis program (Table 4).

Medical prophylaxis

Breeders who did not vaccinate their animals represented a fairly significant share of 33.33%, or more than a third of the actors. In addition to the

provision of care, the mortality rate during breeding made it possible to classify the farms into four (04) groups, the largest of which was made up of farms having observed no mortality during the year (60%). Furthermore, pathologies were commonly observed in most pig farms (Fig. 9). These are parasitic and infectious pathologies (41.67%), the most common of which were scabies and mastitis. Congenital pathologies, namely umbilical and digestive hernia (20%), were responsible for the often fatal diarrhea generally observed in piglets. There are also respiratory pathologies (20%), the most detected of which was cough, and viral pathologies (1.67%) including ASF. However, farmers (16.67%) claimed not to have any common pathologies on their farm.

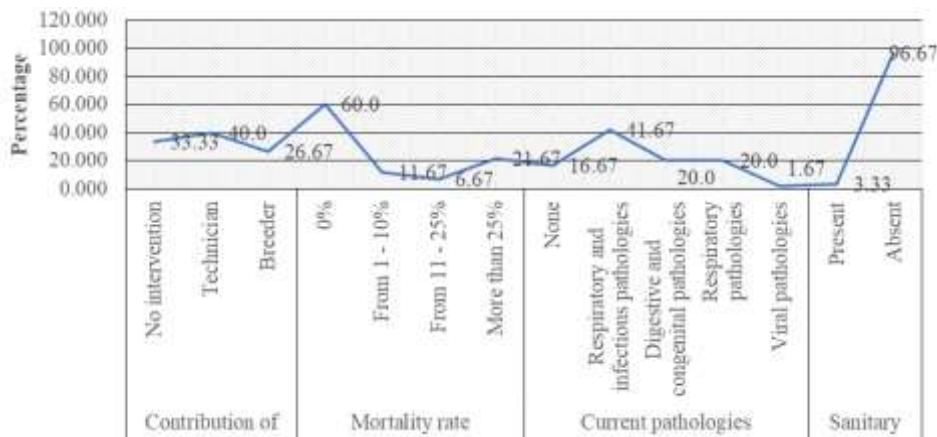


Fig. 9. Medical prophylaxis

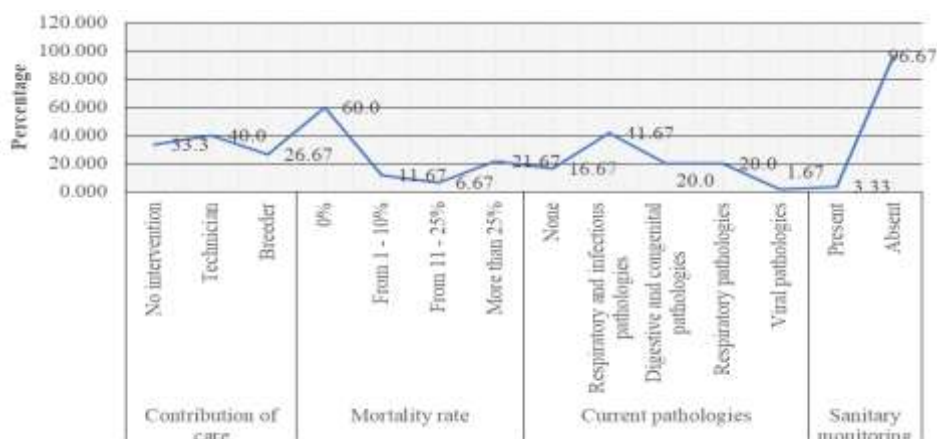


Fig. 10. Swine slurry management

Management of pig manure

The majority of breeders (3/4) have developed an integrated farming system allowing them to take advantage of pig manure by using it as organic fertilizer

to improve their agricultural yield. The most used form (73.33%) was the dry form, obtained after exposing the slurry to the sun (Fig. 10), ensuring easier handling, storage, and field application.

DISCUSSION

The survey of pig farms in the commune of Korhogo showed that the locality of Dokaha was the largest in terms of the number of pig farms (21.67%). It is followed by those of Lakpolo (11.67%), Tchékélézo (8.33%), Natiokobadara (8.33%) and Gnalélékaha, Bafimé, Klokakaha and Waraniéné with 6.67% respectively. Pigsties are represented at 5% and 3.33% respectively in the districts of Logokaha, New district and those of Prémaforo, Téguééré and Nigbélékaha. The lowest numbers of pigsties were recorded in Soba (1.67%) and Ossiéné (1.67%). This strong presence of pigsties observed in Dokaha could be explained by the availability of land on the one hand and on the other hand by its low level of housing. These results are in line with those of Brou *et al.* (2020) who worked in the Korhogo department. These authors showed that Dokaha was the area with the most pig farms with a representation of 22.1%.

Men are predominantly represented in this sector of activity, unlike women. This strong male predominance in pig farming is frequently observed in Côte d'Ivoire (Brou *et al.*, 2020), South Benin (Kiki *et al.*, 2018) and Burkina Faso (Umutoni, 2012). The hegemony of men could be correlated with the endogenous origin of capital and the private nature of production units (Tra Bi, 2009).

The low level of education of pig farmers is also a major constraint in optimizing production performance, managing health crises and adopting technological innovations aimed at revitalizing the sector. These observations, in line with the results of the work of Tra Bi (2009) as well as Ohouko *et al.* (2020), highlight the need to develop practical training adapted to the context of Korhogo.

Producers engage in this activity for profit, seeing it as a way to diversify their income or acquire the foreign currency essential to family balance. This is the reason why farmers favor the breeding of mixed and exotic breeds which offer good performance, namely in number of litters and weight gain, than the local breed. This observation was also made by

Ohouko *et al.* (2020) in southern Benin. The informality of the sector, with 95% of pig farmers operating through personal initiative, as a secondary activity and without belonging to an association, is a real obstacle to the growth of this sector of activity. For comparison, in Benin, where pig farming is experiencing fairly significant development, pig breeders are organized into association groups or cooperatives. The latter benefit from training, support and access to inputs, services and markets (Govoeyi, 2019).

The low membership (5%) of Korhogo pig farmers in an association highlights the alarming need for structuring to improve the resilience and competitiveness of the sector. Interest in pig farming is manifested by a high proportion of initial purchases of animals (91.67%), a step considered necessary by operators for the establishment of their farm. The results obtained do not corroborate with those of Tra Bi (2009) and Brou *et al.* (2020).

Although the majority of pigs are stabled in Korhogo (73.33%), the persistence of scavenging, whether total (6.67%) or alternate (20%), testifies to an ongoing transition in breeding systems. Breeders who practice alternating scavenging and stabling generally release the herd in the dry season then park it in the rainy season to avoid the destruction of crops. These observations differ from those of Abdallah (1997), Missohou *et al.* (2001), Brou *et al.* (2020) and Tassou *et al.* (2021) who respectively worked in the Central African Republic, Senegal, Côte d'Ivoire and Benin. This transition results in the generalization of perennial housing within the farms surveyed.

The structures are built of stones jointed with cement (with or without coating) and covered, partially or entirely, with new or recovered sheets. These observations are similar to the work of Ouattara *et al.* (2022) carried out on pigs in the Korhogo department. Concerning the composition of the pig herd, farms without any boars predominate (51.67%) and those with a total number of more than 20 animals represent 18.33%. On the other hand, some

of the farms own at most 5 sows (73.33%) and others have at least one gilt (23.33%). For reproduction, some breeders rent or borrow boars from other partner pig farmers for a weekly amount of 5,000 CFA francs. This information is consistent with those of Buldgen *et al.* (1994) in Senegal, Abdallah (1997) in the Central African Republic and Nonfon (2005) in Benin. However, Tra Bi (2009) observed an average size of 324.54 pigs per farm. This disparity could be explained by the dynamism of pig farming in the South as well as in the North of Côte d'Ivoire with the rise of modern and semi-modern farms.

In Korhogo, 29% of farmers combine other types of livestock (poultry and ruminants) with pig farming. Although the association of several livestock farms diversifies income and promotes co-products, it also imposes stricter health constraints. Indeed, breeders are aware of the potential danger that breeding several animal species on the same site can pose. These proportions are substantially identical to those of Tra Bi (2009) obtained in the south of Côte d'Ivoire but different from those observed in the Central African Republic by Abdallah (1997) and in Senegal by Missohou *et al.* (2001). Good breeding practice standards recommend that the first mating should be carried out around 7 to 9 months for females and 7 to 10 months for males to maximize sow prolificacy and get the most benefit during the animals' service life (Akilimali *et al.*, 2018). However, the reproductive management in Korhogo remains problematic, notably due to widespread ignorance of the age of first mating among sows (83.33%) and boars (86.67%). This deficiency leads to a significant loss of reproductive potential as well as an inefficient rotation of breeders. The lack of reproduction management sheets in almost all (96.67%) of pig farms in the commune of Korhogo is a real obstacle to the genetic improvement of breeds raised. Indeed, this sheet allows to evaluate the zootechnical efficiency of these latter. It is also a very important tool as emphasized by Molenat and Tran (1991).

The diet, consisting mainly of agricultural, agro-industrial by-products and swill, is provided twice a

day in dry or wet form. This practice corroborates the observations of Tassou *et al.* (2021) regarding the high accessibility of these inputs for farmers. However, although their use is seen as a form of enhancement, they remain insufficient to cover the entire nutritional needs of pigs. As for the choice of the period of food distribution, it seems to be correlated with increased feed efficiency at cool times. These times of the day promote the metabolic comfort of pigs, whose absence of sweat glands limits thermoregulation in the event of high temperatures. These results are contradictory to those obtained by Brou *et al.* (2020).

The unsanitary environment, insufficient disinfection, unsanitary premises and the absence of a footbath at the entrance to livestock buildings constitute critical risk factors. These production conditions further expose the sector to possible major epidemics. Brou *et al.* (2020) also obtained substantially identical results. Thus, the general lack of hygiene observed on the farms visited explains the high prevalence of parasitic and infectious pathologies, such as scabies and mastitis.

The prevalence rates observed for ASF and pork mullet demonstrate the vulnerability of the sector. Thus, the post-ASF or post-Rouget mortality rate is high and estimated at over 25% on 11.67% of affected farms. These values corroborate the high lethality rate of ASF which can reach 100% of the herd in the absence of biosecurity measures (Gagnon, 1998). The non-existence of biosecurity measures and insufficient vaccination coverage (34%) constitute the main health obstacles explaining the increase in losses on the farms surveyed. According to Sánchez-Vizcaíno *et al.* (2015), the prevention and control of porcine viral pathologies are essentially based on vaccination associated with rigorous biosecurity.

Concerning slurry, it is monetized by the majority of breeders. Indeed, slurry is an organic fertilizer allowing organic production, improving soil quality, limiting the use of chemical fertilizers and increasing the financial capital of the breeder. These results are

consistent with the work of Sib *et al.* (2014) on the diversity and dynamics of agrarian systems in the commune of Korhogo.

CONCLUSION

This study highlights that pig farming in the commune of Korhogo remains largely traditional and constrained by several structural and operational challenges. The sector is dominated by small-scale, informal producers with limited access to training, financial resources, and veterinary services. Poor hygiene practices, weak biosecurity measures, and low adoption of prophylactic programs further increase vulnerability to diseases, thereby affecting productivity and profitability. Despite these constraints, pig farming contributes to income diversification, and the integration of manure into crop production reflects a valuable agro-ecological practice. Overall, the sector shows potential for development, provided that key limitations are effectively addressed.

RECOMMENDATIONS

To ensure sustainable development and improve the performance of pig farming in Korhogo, the following measures are recommended:

Capacity building: Implement practical and accessible training programs focused on biosecurity, feeding, and reproductive management for both educated and non-educated farmers.

Strengthening biosecurity: Promote simple, low-cost hygiene and disinfection practices through awareness campaigns, and support farmers in adopting basic biosecurity infrastructure.

Veterinary service improvement: Enhance access to veterinary care, vaccines, and diagnostic tools, while establishing an effective disease surveillance and early warning system.

Financial support mechanisms: Facilitate access to credit through microfinance schemes, rural banking partnerships, and guarantee funds tailored to small-scale pig farmers.

Farmer organization: Encourage the formation of cooperatives or associations to improve access to training, inputs, markets, and financial services.

Manure valorization: Promote the transformation of pig manure into compost through training and integration with crop farming systems to enhance soil fertility and income.

Policy and project alignment: Ensure that future livestock development programs incorporate these strategic priorities for a more resilient and competitive pig farming sector.

REFERENCES

Abdallah E. 1997. Elevage porcin en région périurbaine de Bangui (Centrafrique). Thèse de doctorat en médecine vétérinaire, Ecole Inter-Etats des Sciences et de Médecine Vétérinaire de Dakar, 77p.

Akilimali JI, Wasso DS, Baenyi P, Bajope JB. 2018. Caractérisation des systèmes de production porcine de petits exploitants dans trois zones agro-écologiques du Sud-Kivu en République Démocratique du Congo. *Journal of Applied Biosciences* **120**, 12086–12097.

Angbo-Kouakou E, Kouakou NDV, Temple L, Kouba M. 2018. Transferts technologiques et innovations locales: transition de la filière porcine en Côte d'Ivoire. In: *Politiques agricoles et alimentaires: trajectoires et réformes*, 6p.

Brou GKG, Adou CFD, Meniga M, Soro RY. 2020. Caractérisation des élevages porcins dans le département de Korhogo. *Journal of Applied Science and Environmental Studies* **3(3)**, 183-198.

Buldgen A, Piraux M, Dieng A, Schmit G, Compère R. 1994. Les élevages de porcs traditionnels du bassin arachidier sénégalais. *Revue Mondiale de Zootechnie* **80–81**, 63-70.

FAO. 2020. Peste porcine africaine: des cas isolés de la maladie dans le nord et aujourd'hui dans l'ouest du pays (Côte d'Ivoire). <https://www.fao.org/cote-divoire/actualites/detail-evenements/fr/c/1304216/>

Govoeyi B, Ahounou SG, Agbokounou AM, Salifou CF, Dotche IO, Kiki PS, Karim IYA, Antoine-Moussiaux N. 2019. Participatory innovation analysis along livestock value chains: case of swine value chain in Benin. *Agricultural Systems* **174**, 11–22.

Gragnon BG. 1998. Peste porcine africaine en Côte d'Ivoire: lutte et éradication. Thèse de doctorat en médecine vétérinaire, Ecole Inter-Etats des Sciences et de Médecine Vétérinaire de Dakar, 101p.

Jeannin M. 2024. Côte d'Ivoire: le retour de la peste porcine africaine alarme des éleveurs de porcs. *RFI Afrique*.

Kiki PS, Dahouda M, Toleba SS, Ahounou SG, Dotché IO, Govoeyi B, Antoine-Moussiaux N, Mensah GA, Farougou S, Karim IYA. 2018. Gestion de l'alimentation des porcs et contraintes de l'élevage porcin au Sud-Bénin. *Revue d'Élevage et de Médecine Vétérinaire des Pays Tropicaux* **71**, 1–8.

Landais E, Faye J. 1986. Méthodes pour la recherche sur les systèmes d'élevage en Afrique intertropicale. *CIRAD-IEMVT*, 733p.

MIRAH. 2022. Politique nationale de développement de l'élevage, de la pêche et de l'aquaculture. 178p.

Missohou A, Niang M, Foucher H, Dieye PN. 2001. Pig production systems in Lower Casamance (Senegal). *Cahiers Agricultures* **10**, 405–408.

Molenat M, Tran The Thong. 1991. La production porcine au Viet Nam et son amélioration. *World Review of Animal Production* **68**, 26–36.

Nonfon WR. 2005. La filière de production du porc local au Bénin: l'amélioration de sa productivité par l'alimentation. Thèse de doctorat, Faculté Universitaire des Sciences Agronomiques de Gembloux, 236p.

Ohouko OFH, Koudouvo K, Dougnon TJ, Agbonon A, Gbeassor M. 2020. Pratiques d'élevage de porcs au Sud-Bénin: utilisation des plantes dans la gestion alimentaire et sanitaire. *Journal of Animal and Plant Sciences* **44(3)**, 7677–7694.

Ouattara B, Ouattara H, Gragnon BG, Soro D, Diby NAS, Soro YR, Coulibaly A. 2022. L'élevage porcin en Côte d'Ivoire et la couverture de leurs besoins en vitamine D. *Revue des Instituts de Recherches et des Centres Techniques des Filières Viandes et Produits Carnés* **38**, 1–15.

Porphyre V. 2009. Enjeux et contraintes des filières porcines en Afrique de l'Ouest. In: Répondre aux évolutions alimentaires, un défi majeur pour l'élevage africain. *Grain de sel* **26–27**.

Sánchez-Vizcaíno JM, Mur L, Gomez-Villamandos JC, Carrasco L. 2015. An update on the epidemiology and pathology of African swine fever. *Journal of Comparative Pathology* **152(1)**, 9–21.

Sib O, Michel H, Vall E, Kanwé A, Fantodji A, Coulibaly A. 2014. Diversité et dynamique des systèmes agraires et des exploitations agropastorales de la région de Korhogo (Côte d'Ivoire). Mémoire de master, Université NANGUI ABROGOUA, 67p.

Tassou AW, Attindéhou S, Salifou S. 2021. Caractérisation de l'élevage porcin au Bénin. *International Journal of Biological and Chemical Sciences* **15(4)**, 1338–1354.

Tra Bi TC. 2009. Filière porcine en Côte d'Ivoire: Production, propositions d'amélioration et perspectives de développement. Thèse, Ecole Inter-Etats des Sciences et Médecine Vétérinaire, Dakar, 102p.

Umutoni C. 2012. Evaluation technico-économique des élevages de porc à Bobo-Dioulasso (Burkina Faso). Mémoire, Ecole Inter-Etats des Sciences et Médecine Vétérinaire, Dakar, 32p.